



**BlazeFrame "FSB" (Flat Strap Backer)**

Certified to ASTM E-119 Standards - (WFCi - Report #12142)

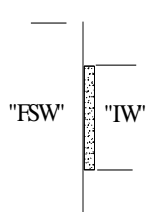
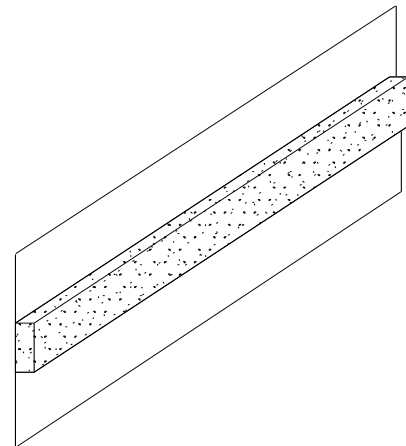
Up to 2 Hour Fire Rated Protection

Install Behind Drywall Reveal Moldings

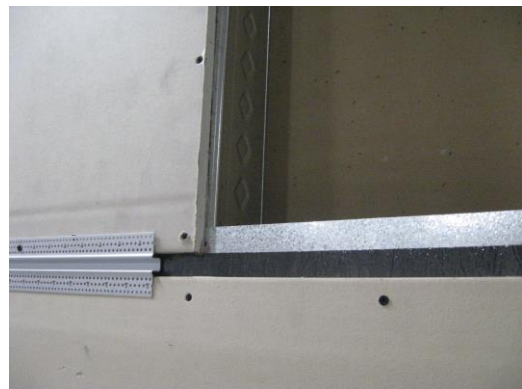
Eliminate "Extra Layer" of Drywall to Maintain Rated Partition

Metal Strap Support for Drywall and Reveal Attachment - Horizontal and Vertical

Zinc or Vinyl Architectural Reveal Molding Installed Over Gap



Part #	Intumescent Width "IW"	Flat Strap Width "FSW"	Gauge
FSB075	0.75"	3.00"	.030
FSB100	1.00"	3.00"	.030
FSB125	1.25"	3.00"	.030

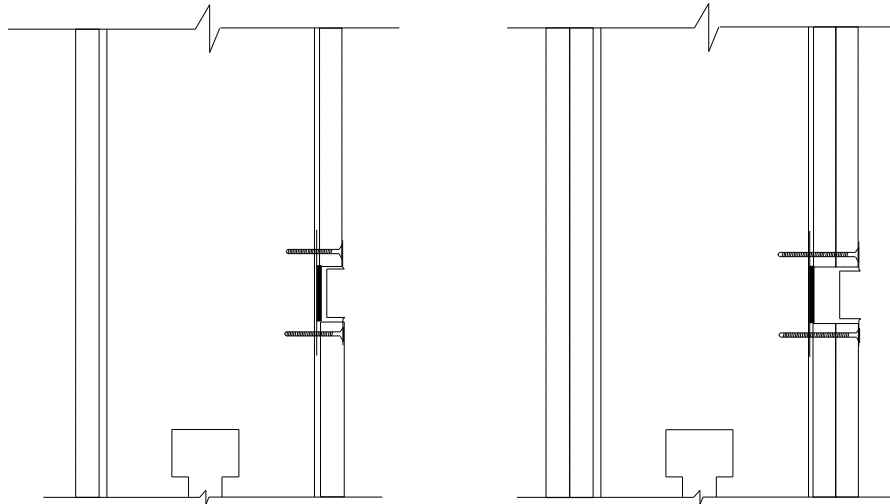




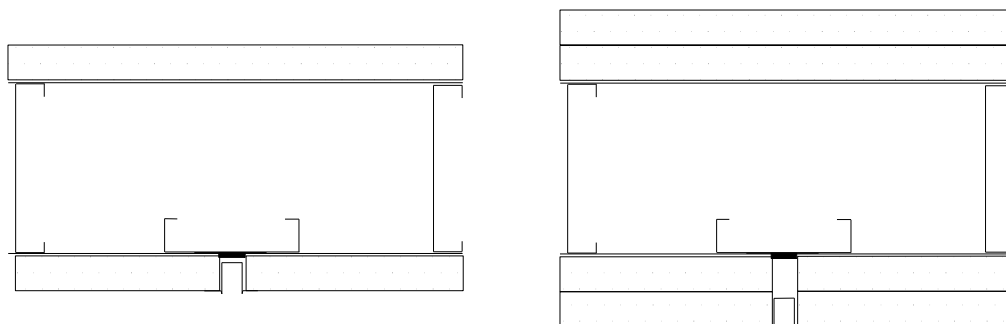
**Installation:**

- Locate FSB taugt between "stud(s)" and wall sheathing
- Edges of wall sheathing align with edges of intumescent material
- Fasten Sheathing Edges max. 8" O/C use sheathing fasteners for attachment
- Install Reveal Moulding over Gap - (1/2" deep profile)

**Horizontal - Side View FSB (One and Two Hour)**



**Vertical - Top View FSB with Stud Backer (One and Two Hour)**



FSB Profiles are manufactured with 20ga galvanized steel complying with ASTM A653 having a minimum G40 coating. Profiles comply with ASTM C645 and are installed behind joints in wall sheathing where reveal molding (Zinc or Vinyl) are installed.