

# Product Profile Dimensions

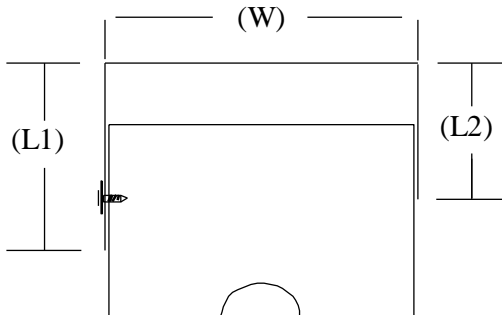
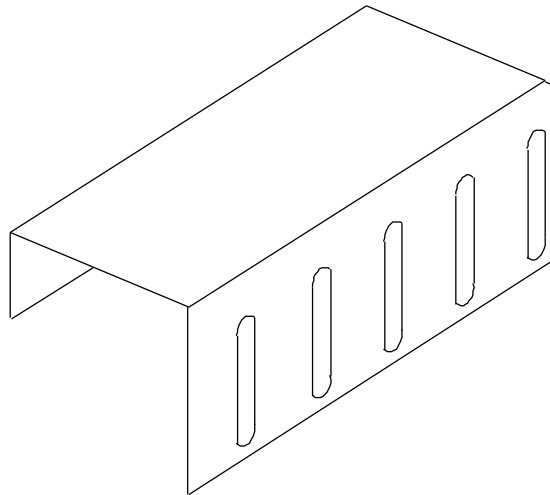


Sound Tested in Accordance  
with ASTM E90-09

## “SJT” (Slotted “J” Track) Profiles One slotted and One solid leg

Framing for use in up to 2 hr rated wall assemblies. Provides up to 1 1/2” overall movement with level III (seismic) certification. Minimum G40 (20ga) and G60 (18ga and heavier) coating having one leg with slots 1” O/C for single sided attachment of studs per listed assemblies in UL Fire Resistance Directory. Custom widths and flange lengths available upon request.

Widths (W)	Mil (Ga)
250 (2 1/2")	.030 (20)
362 (3 5/8")	.033 (20)
400 (4")	.043 (18)
600 (6")	.054 (16)
800 (8")	.068 (14)



Part Identification  
Example: 250-SJT-150-30

250	SJT	150	-	30
Track Width	Profile	Series		Gauge

Profile	Slotted Leg Length (L1)	Solid Leg Length (L2)	Slot Height (S)
SJT-150	2.50"	2.00"	1.50"
SJT-200	3.00"	2.50"	2.00"

### UL, ASTM & Code Standards

UL2079 (5<sup>th</sup> Edition) & CAN/ULC S115  
ASTM E814, E1966, E2837  
A1003, A653, A924, C645, C754, C955  
Sound Tested according to ASTM E90-09  
2015 & 2018 IBC

### Leed Points

MR 2.1 & 2.2 - Construction Waste: up to 2pts  
MR 4.1 & 4.2 - Recycled Content: up to 2 pts  
MR 5.1 & 5.2 - Regional Proximity  
EQ 4.1 - Low Emitting Materials  
EQ 9 - Enhanced Acoustical

Phone: (425) 869-2811 Fax: (425) 869-2300