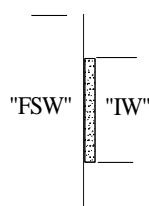
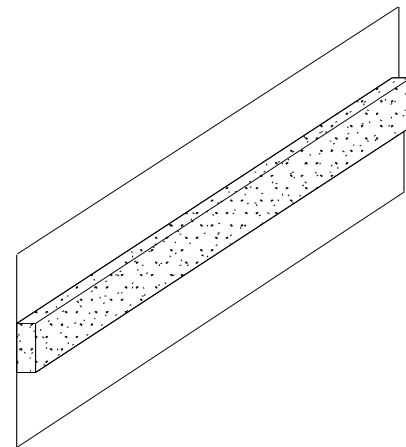




**Safti-Seal "FSB" (Flat Strap Backer)**

Certified to ASTM E-119 Standards - (WFCi - Report #12142)  
 Up to 2 Hour Rated Protection & Early Unobstructed Inspection  
 Install Behind Drywall Reveal Moldings - Horizontal & Vertical  
 Eliminate "Extra Layer" of Drywall to Maintain Rated Partition  
 Backing for Drywall Edge & Reveal Trim Attachment Between Stud Framing  
 Zinc or Vinyl Architectural Reveal Molding Installed Over Gap



Part #	Intumescent Width "IW"	Flat Strap Width "FSW"	Gauge
FSB075	0.75"	3.00"	.030
FSB100	1.00"	3.00"	.030
FSB125	1.25"	3.00"	.030

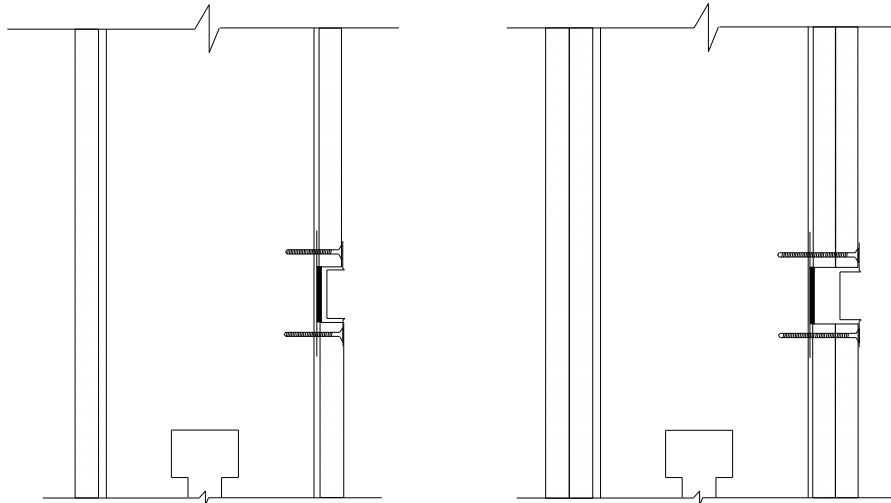




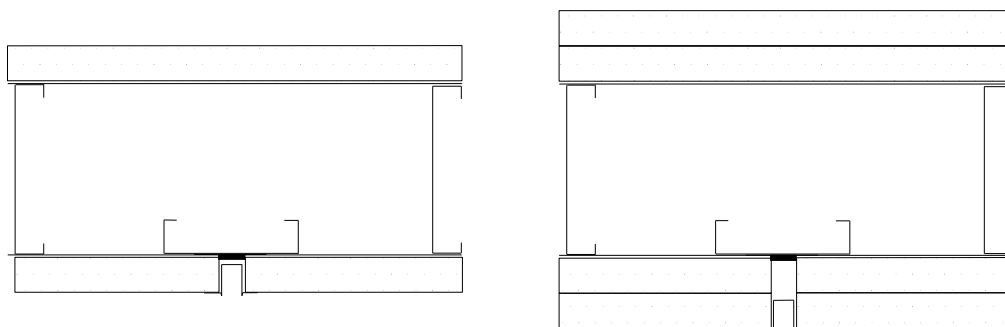
**Installation:**

- Locate FSB taugt between "stud(s)" and wall sheathing
- Edges of wall sheathing align with edges of intumescent material
- Fasten Sheathing Edges max. 8" O/C use sheathing fasteners for attachment
- Install Reveal Moulding over Gap - (1/2" deep profile)

**Horizontal - Side View FSB (One and Two Hour)**



**Vertical - Top View FSB with Stud Backer (One and Two Hour)**

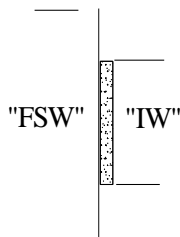
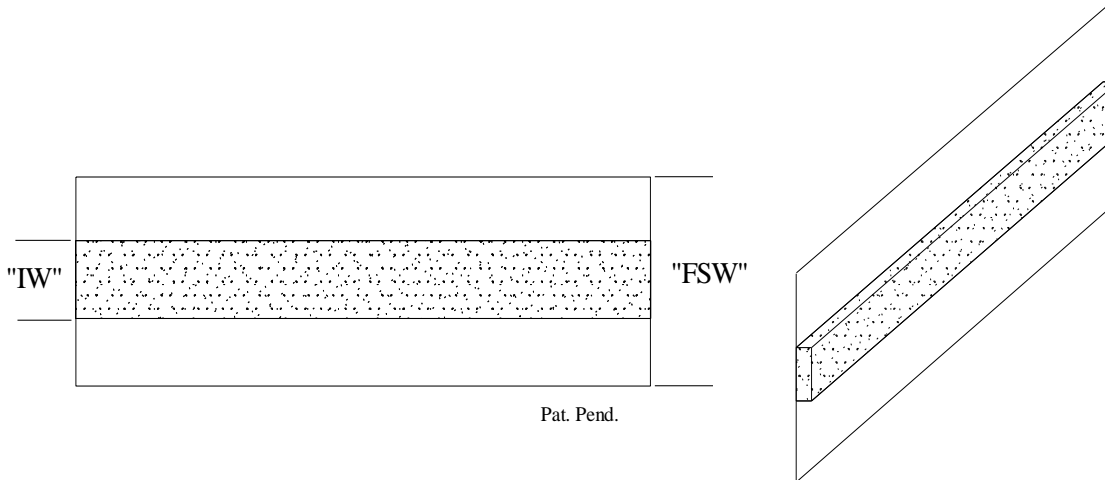


FSB Profiles are manufactured with 20ga galvanized steel complying with ASTM A653 having a minimum G40 coating. Profiles comply with ASTM C645 and are installed behind joints in wall sheathing where reveal molding (Zinc or Vinyl) are installed.



**PS16 - "FSB" profiles for Protection of Reveal and Control Joints**

Composite Gasket/Flat strap Profiles for use to protect Architectural design joints (drywall reveal mold or control joint over gap) for up to 2 hr rated assemblies. Tested and certified to ASTM E-119 Standards (WFCi - Report #12142). Profile sections are fabricated from hot-dipped galvanized steel complying with ASTM A653 with a minimum G40 (20ga) and G60 (18ga and heavier) coating. Profiles comply with ASTM C645 and provide a flat strap metal supporting fire stop materials.



Part #	Intumescent Width "IW"	Flat Strap Width "FSW"	Gauge
FSB075	0.75"	3.00"	.030
FSB100	1.00"	3.00"	.030
FSB125	1.25"	3.00"	.030

**UL, ASTM & Code Standards**

UL2079 (5<sup>th</sup> Edition) & CAN/ULC S115  
 ASTM E814, E1966, E2837  
 A1003, A653, A924, C645, C754, C955  
 Sound Tested according to ASTM E90-09  
 2015 & 2018 IBC

**Lead Points**

MR 2.1 & 2.2 - Construction Waste: up to 2pts  
 MR 4.1 & 4.2 - Recycled Content: up to 2 pts  
 MR 5.1 & 5.2 - Regional Proximity  
 EQ 4.1 - Low Emitting Materials  
 EQ 9 - Enhanced Acoustical

Phone: (425) 869-2811 Fax: (425) 869-2300  
 U.S. Patent #10,626,598