



## **SCAB-WIC-SD - Wall Intersections Slit Drywall & Slider Stud**

### **Wall Intersection & “Slider Gap” Defect Solution – SCAB-WIC-SD**

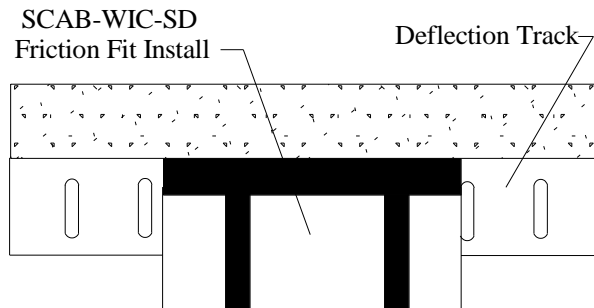
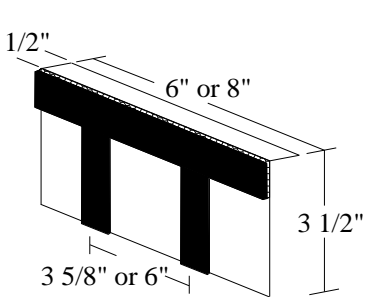
*Maintain Fire Rating & Deflection Capability of Rated Wall* protecting “Drywall Deflection Slits” in a “*dissimilar or non-rated*” Intersecting Wall. Provide Code Required Backing Solution at Common Construction Defect “slider sheets” Gap.



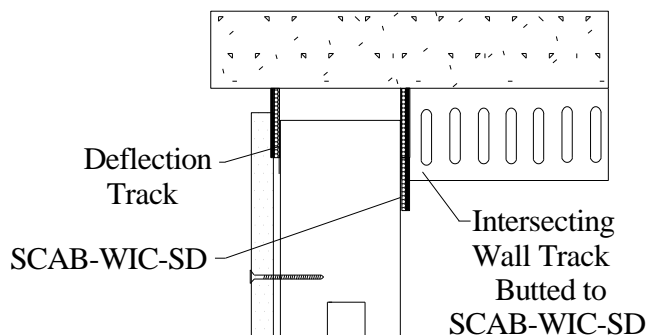
Solution to Maintain Required Deflection & Joint Seal Backing at Dissimilar Rated Wall Intersections?



- 1) Friction Fit SCAB-WIC-SD over track at intersection of wall assemblies with 1/2” flange located between Overhead and Track Flange (no fasteners required)



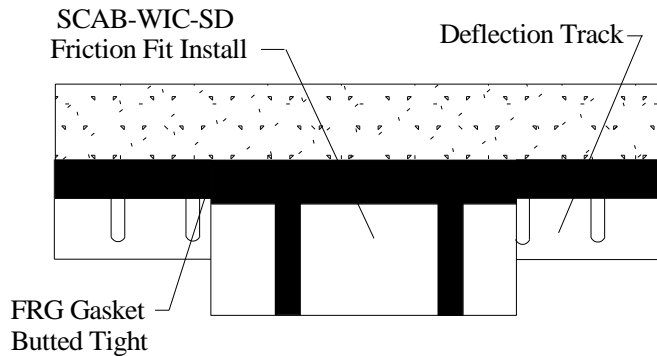
- 2) Butt dissimilar rated or non-rated Intersecting Wall Track to SCAB-WIC-SD for backing support of fire, smoke, or sound joint protection of Intersecting Wall (eliminate slider gap and deflection construction defects)





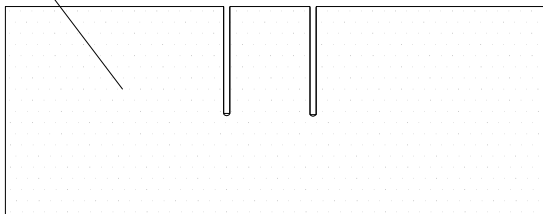
## **SCAB-WIC-SD - Wall Intersections Slit Drywall & Slider Stud**

- 3) Install appropriate Safti-Seal FRG gasket (sized to accommodate required deflection/protection) along track flanges butting to FRG on SCAB-WIC-SD clip



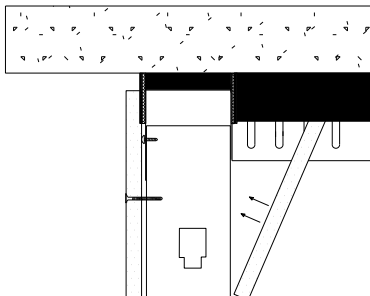
- 4) Measure Slider Sheet & knife slit/cut or router out "Deflection Slits" to accommodate downward deflection of track flanges

"Slit Slider Sheet" - notched to flange width & deep enough to accommodate track flange deflection

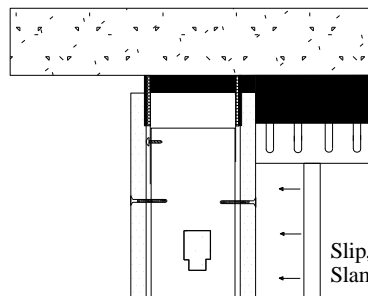


- 5) Insert "Slit Slider" overlapping FRG (inside and outside intersection) for Specified Deflection & Joint Protection

"Flop or Tuck" Slit Slider into place  
Overlap FRG per Required Install



Joint Protection of Intersecting Wall  
with Continuous Backing to meet  
STC, Deflection, & Code Certification



Slip, Slider, or  
Slammer Stud

