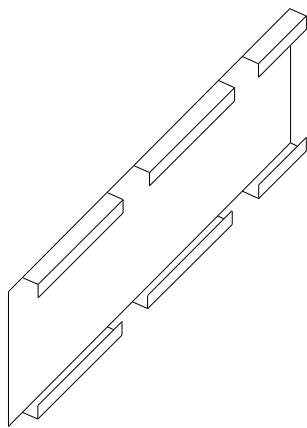




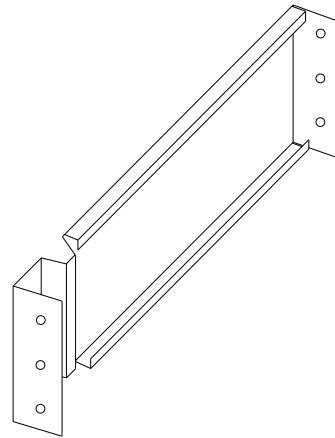
### Notched Strong Back (NSB) vs. Notched Track (NT)

Profile	Horizontal Load - lbs	Screws per Stud	Wall Cavity Penetration	OSHDP - ST5.00 80 lbs	OSHDP - ST5.01 20 lbs	OSHDP - ST5.03 ADA - Grab Bar 250 lbs
600NSB50-33	84	2	0.50"	Yes	Yes	No
600NT125-33*	n/a	n/a	n/a	n/a	n/a	n/a
600NSB50-43	105	3	0.50"	Yes	Yes	No
600NT125-43*	73	7	1.25"	No	Yes	No
600NSB50-54	189	3	0.50"	Yes	Yes	Yes**
600NT125-54*	155	7	1.25"	Yes	Yes	Yes**

Notched Strong Back



Flush Backing Plate



Both "low profile" backing profiles provide same capacities and:

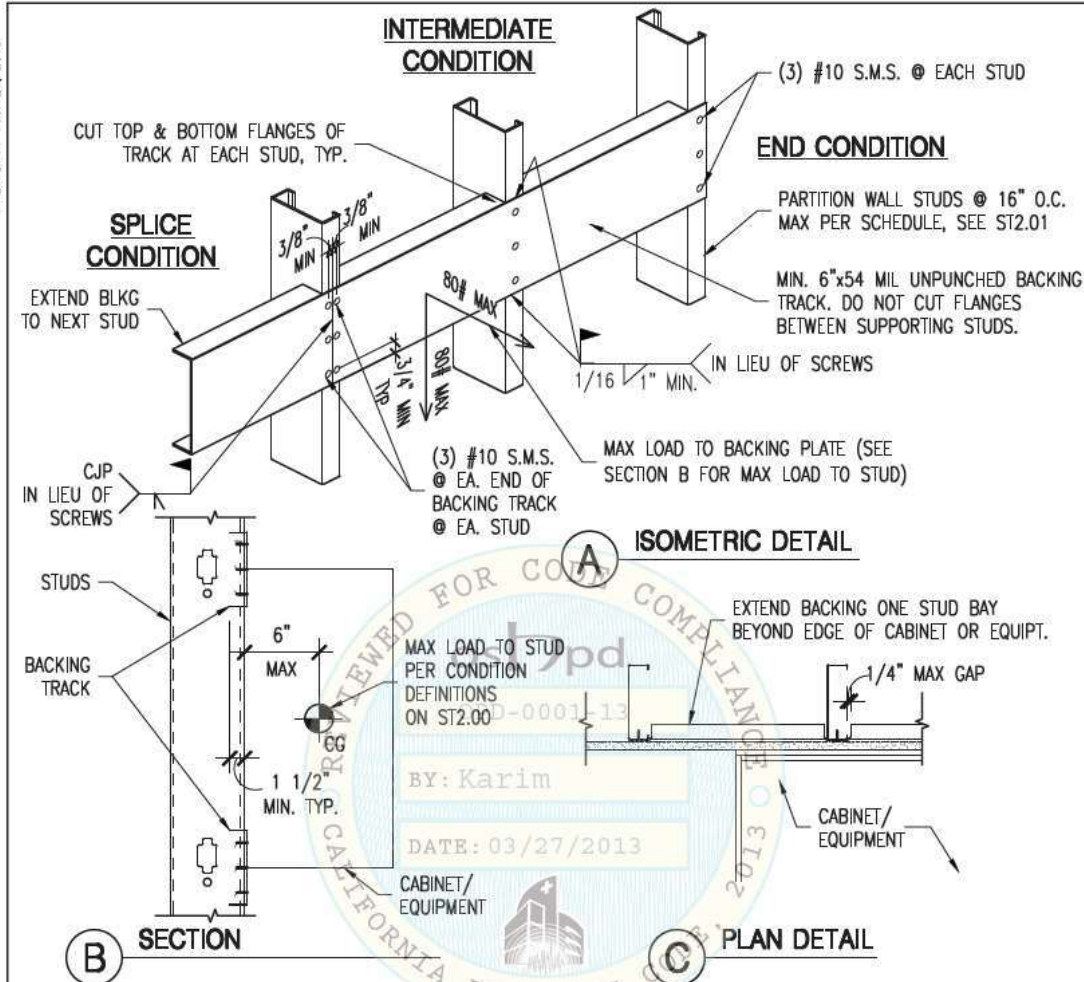
1. Engineered horizontal loads capacities (no published capacities for Flat Stock Profiles)
2. Meet majority of standard requirements using 20ga profiles
3. Average 30 lbs more horizontal load capacity than Notched Track Profiles\*
4. Can be used with less fasteners (based on vertical/hanger load)
5. Have 1/2" flanges reducing field modification for vertical obstructions (pipes, conduits, etc...)
6. Reduce use of "peanut grinder/chop saw" as 20ga profile can be field modified with hand snips
7. Can be ordered custom knockouts (Notched Strong Back) to accommodate off center studs
8. Can be used with "repair clip" (Flush Backing Plate) to accommodate <16" spans

\*Based on published tables by Steel Network Inc

\*\* Based on location of attachment and number of fastener



PLOT DATE: Mar 27, 2013



**BACKING PLATE DETAIL TYPE 1**

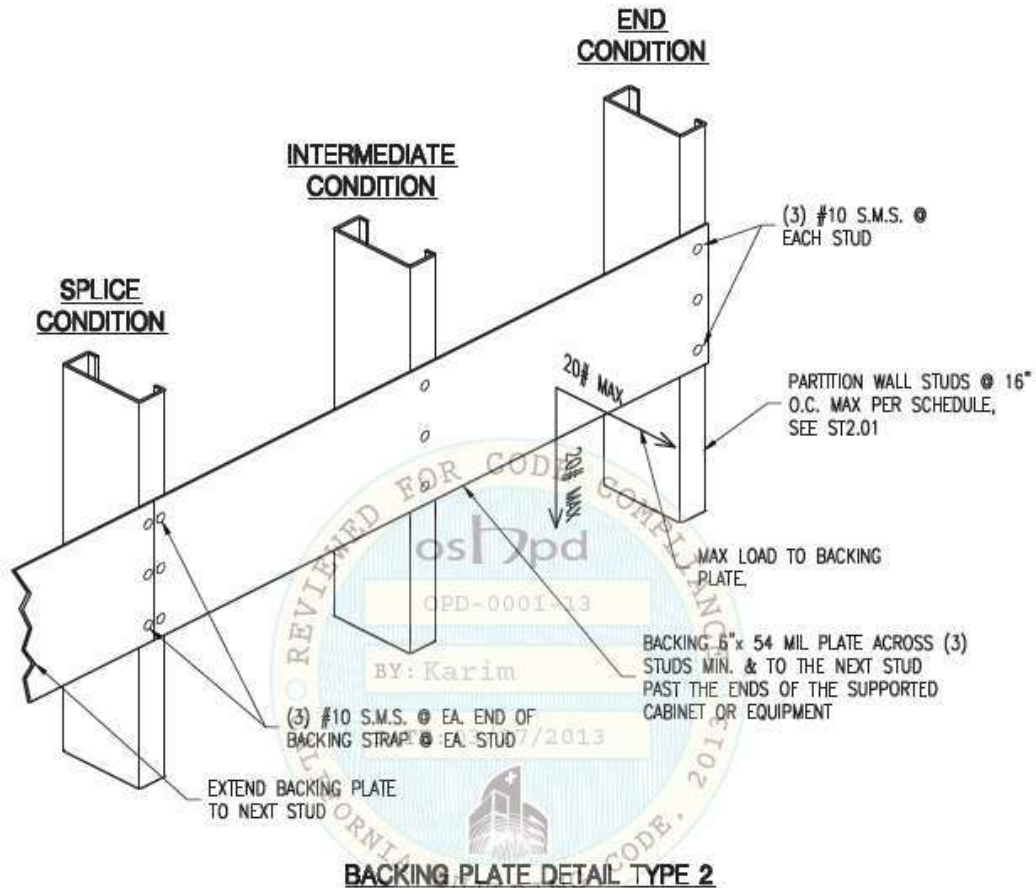
**NOTES:**

1. BACKING, CONNECTION TO STUD, AND STUDS FOR CABINETS OR EQUIPMENT EXCEEDING THIS LIMIT SHALL BE DESIGNED AND DETAILED BY RDP IN RESPONSIBLE CHARGE.
2. ST5.01 MAY BE USED FOR ATTACHMENT OF CABINETS OR EQUIPMENT DISTRIBUTING LESS THAN 20# PER STUD (CENTER OF GRAVITY LESS THAN 6" FROM FACE OF STUD).
3. NOTCHING OR CUTTING OF BACKING PLATE IS NOT PERMITTED EXCEPT AS SHOWN.

SECTION TITLE: <b>STANDARD PARTITION WALL DETAILS</b>		OPD NO.:
SHEET TITLE: <b>BACKING PLATE DETAIL TYPE 1</b>		<b>ST5.00</b>



PLOT DATE: Mar 27, 2013



**NOTES:**

1. THIS DETAIL MAY BE USED FOR ATTACHMENT OF CABINETS OR EQUIPMENT DISTRIBUTING LESS THAN 20# PER STUD (CENTER OF GRAVITY LESS THAN 6" FROM FACE OF STUD).
2. SEE ST5.00 FOR ALTERNATE WELDING OPTION.
3. NOTCHING OR CUTTING OF BACKING PLATE IS NOT PERMITTED.

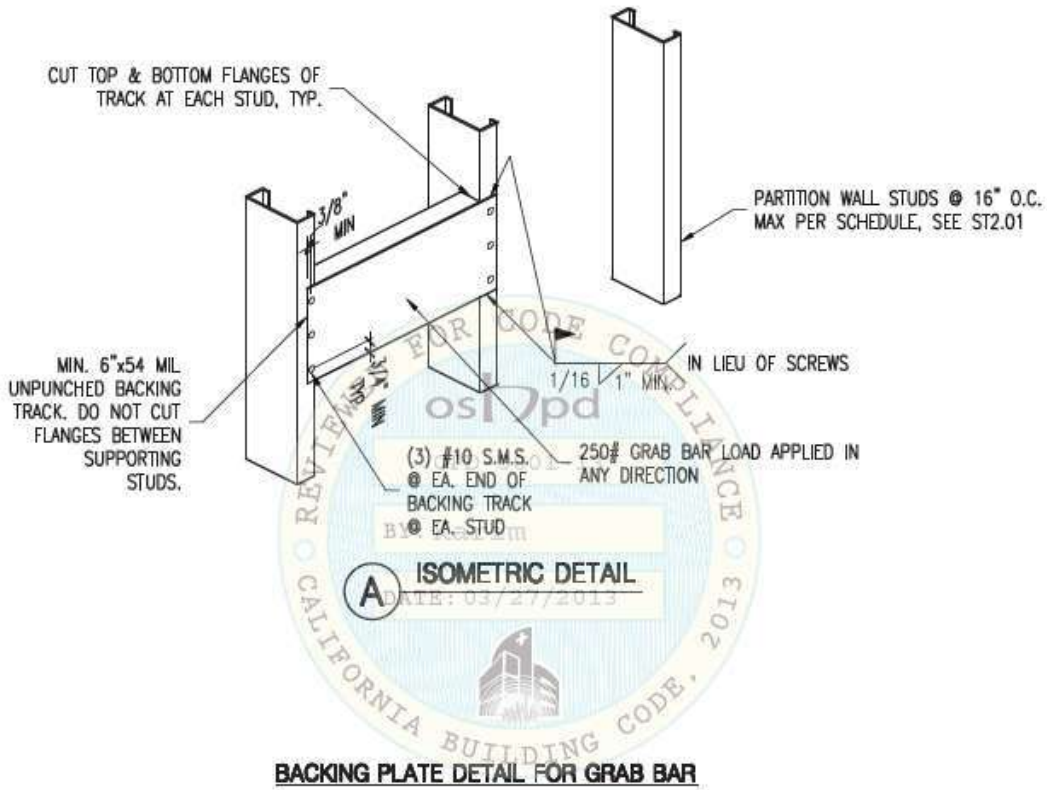
SECTION TITLE:  
STANDARD PARTITION WALL DETAILS

SHEET TITLE:  
BACKING PLATE DETAIL TYPE 2

OPD NO.:  
**ST5.01**



PLOT DATE: Mar 27, 2013



**NOTES:**

1. NOTCHING OR CUTTING OF BACKING PLATE IS NOT PERMITTED EXCEPT AS SHOWN.

SECTION TITLE:

STANDARD PARTITION WALL DETAILS

SHEET TITLE:

BACKING PLATE DETAIL FOR GRAB BAR

OPD NO.:

ST5.03