

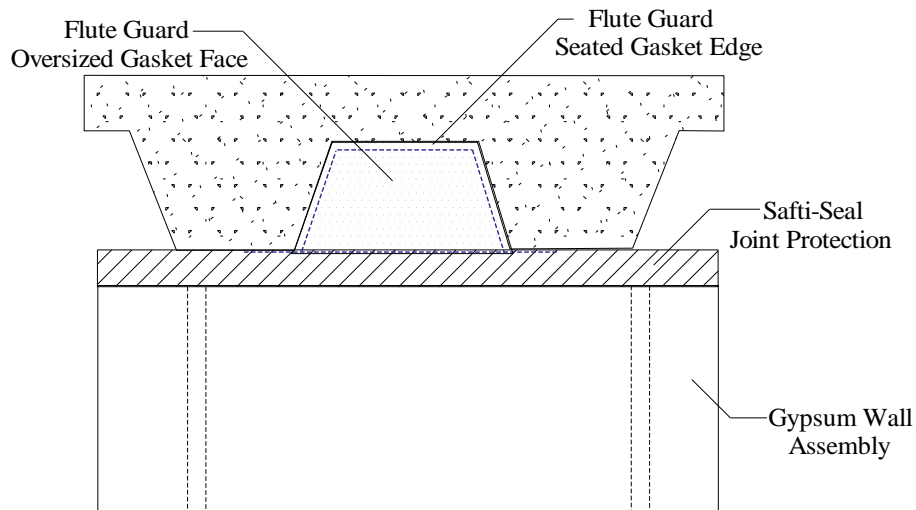
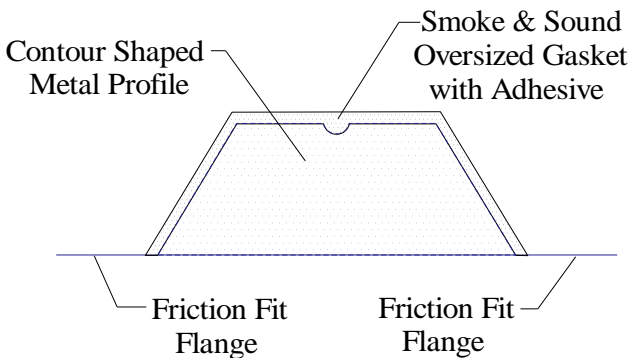
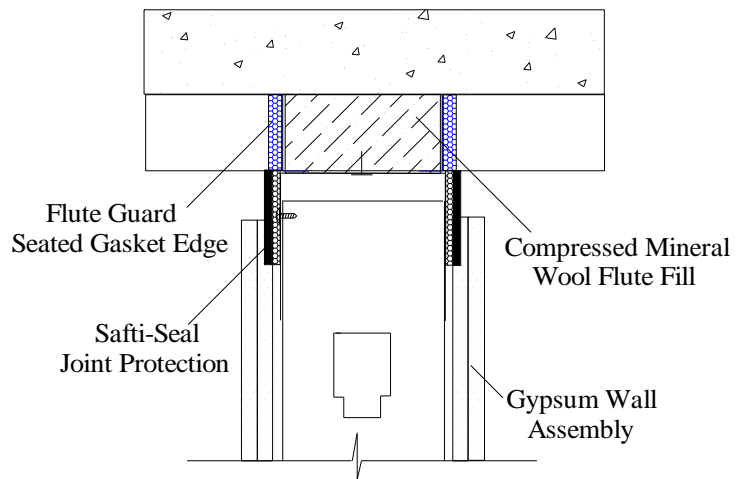
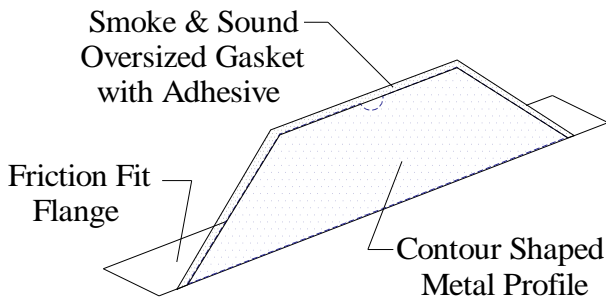
# Product Profile Dimensions



Sound Tested in Accordance  
with ASTM E90-09

## PS18 – Flute Guard Gasket Seal

Aesthetic & Sound Cover for Fluted Voids in Metal Deck – Oversized Gasket Layer Conforms & Adheres to Deck Contour/Embossments. Eliminates Contour Cut Drywall, Caulk, and Spray Issues with No Lifetime Fatigue or Maintenance of Flute Fill, Substrate, or Joint Protection. Certified ASTM E-90 Reports TL19-112 & 115 maintains 64 STC rating (relates to specific construction). ASTM E84 Flame Spread: 0; Smoke Development: 0



Product	Flute Height	Flute Coverage	Flute Opening Dimensions
FG-300	3.00"	Single	3" x 5" x 7"
FG-200	2.00"	Single	2" x 5" x 7"
FG-150	1.50"	Three	1.50" x 3.5" x 4.5"

[www.saftiseal.com](http://www.saftiseal.com)

Phone: (425) 869-2811 Fax (425) 869-2300