



Install Guide & Tips – Mineral Wool Flute Fill

Mineral Wool – Flute Cover Termination

Mineral Wool used as "flute fill" to seal "open end" of Flute Cover profile for fluted deck conditions in conjunction with Safti-Seal FRG required install to meet UL listed assemblies as follows:

Forming Material — Min 4 pcf (64 kg/m³) density mineral wool batt insulation cut a min. 3.00" in length and to a thickness 33 percent greater than the height of the flutes. Compressed and install into fluted area above Flute Cover termination above wall assembly. When gaps are present above ceiling runner at steel deck seams or embossments in steel deck valleys, a sliver of mineral wool batt insulation shall be used to seal each gap to attain L Ratings.

Forming Material-Plugs — (Not Shown) As an alternate to the Forming Material, mineral wool plugs preformed to the shape of the fluted floor units or roof deck, may be used within the flute above Flute Cover Termination. Plugs shall be friction fitted to completely fill the flutes.

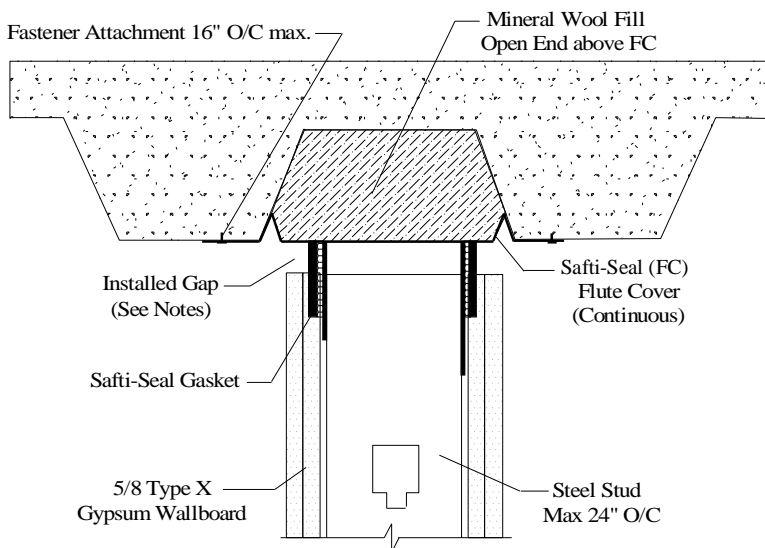
Safti-Seal — Oversize Deck Plugs

Safti-Seal — Wrapped Deck Plugs

Installation Tips:

- 1) Compress mineral wool before insertion for ease of insertion into cavity
- 2) Insert a min 3.00" length into fluted area above Flute Cover
- 3) Areas above Sati-Seal FRG to be completely filled (no gaps or light shining through)

Flute Cover Termination (End View)



Flute Cover Termination (Side View)

