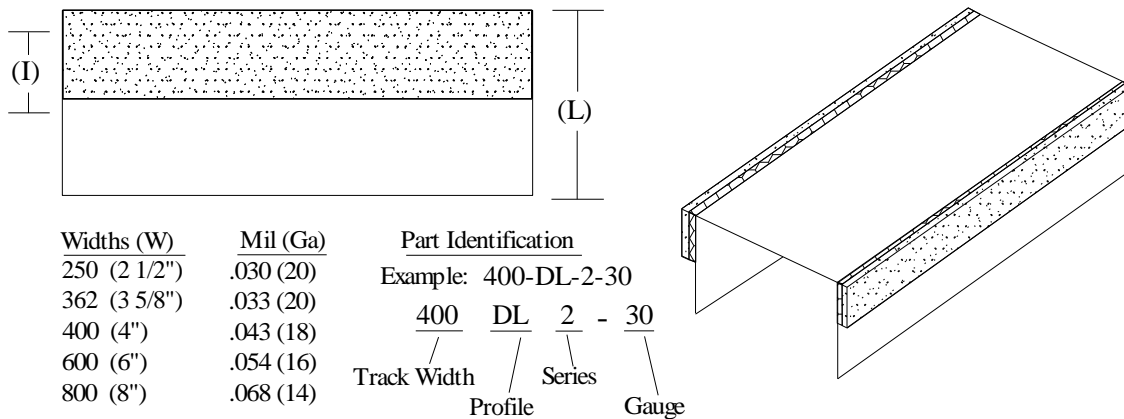


# Product Profile Dimensions

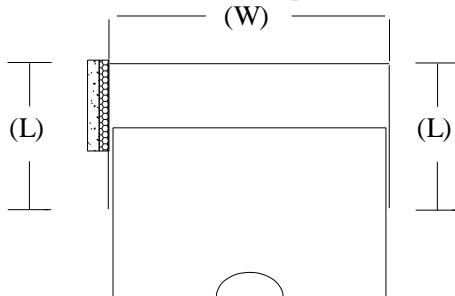


## PS1 – SaftiFrame “DL” (Deep Leg) Profiles with two solid legs

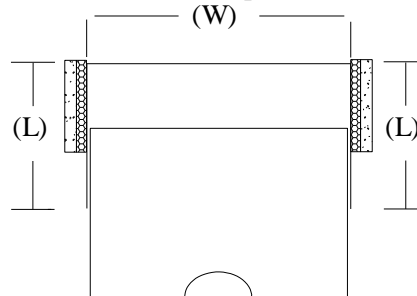
Composite Safti-Strip/Framing up to 2 hr rated assemblies. Provides 100% unencumbered and up to 2” joint protection with level III (seismic) certification. Minimum G40 (20ga) and G60 (18ga and heavier) coating solid legs supporting “free floating” studs per listed assemblies in UL Fire Resistance Directory.



1 - Series (Fire Stop One Side)



2 - Series (Fire Stop Both Sides)



Profile	Leg Length (L)	Strip Width (I)	Slot Height (S)	Joint Protection
DL	2.00"	1.00"	N/A	.75"
DLW	2.00"	1.25"	N/A	1.00"
DLX	2.50"	1.75"	N/A	1.50"
DLZ	3.00"	2.25"	N/A	2.00"

### UL, ASTM & Code Standards

UL2079 (5<sup>th</sup> Edition) & CAN/ULC S115  
 ASTM E814, E1966, E2837  
 A1003, A653, A924, C645, C754, C955  
 Sound Tested according to ASTM E90-09  
 2015 & 2018 IBC

### Leed Points

MR 2.1 & 2.2 - Construction Waste: up to 2pts  
 MR 4.1 & 4.2 - Recycled Content: up to 2 pts  
 MR 5.1 & 5.2 - Regional Proximity  
 EQ 4.1 - Low Emitting Materials  
 EQ 9 - Enhanced Acoustical

Phone: (425) 869-2811 Fax: (425) 869-2300