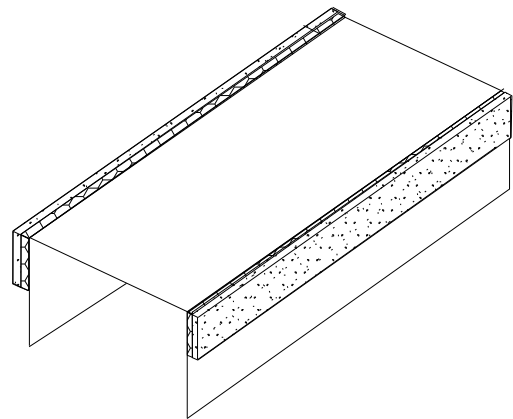
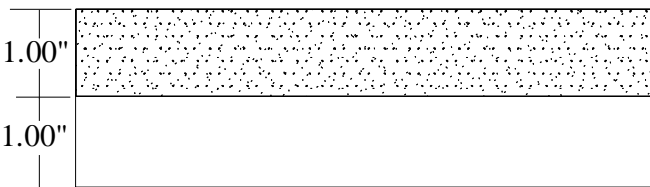


# Product Profile Dimensions



## PS13 – SaftiFrame “VT” (Vertical Joint) profiles with two solid legs

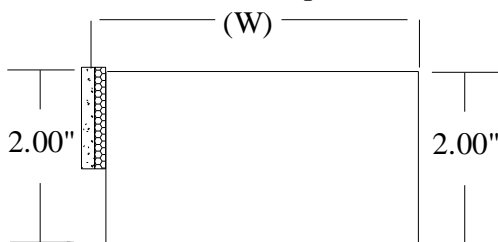
Composite Safti-Strip/Framing for use in up to 2 hr rated wall assemblies. Provides protection of vertical joints at wall intersection with "dissimilar" material (concrete or steel column/walls). Minimum G40 (25ga) and G60 (18ga and heavier) coating with two solid legs per UL listed assemblies in UL Fire Resistance Directory.



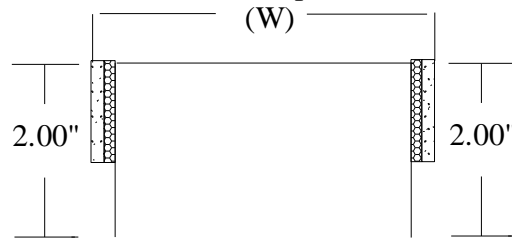
Widths (W)	Gauge
250 (2 1/2")	.030 (20)
362 (3 5/8")	
400 (4")	
600 (6")	
800 (8")	

Part Identification  
 Example: 362-VT-2-30  
 362    VT    2    -    30  
 Track Width    Profile    Series    Gauge

1 - Series (Fire Stop One Side)



2 - Series (Fire Stop Both Sides)



### UL, ASTM & Code Standards

UL2079 (5<sup>th</sup> Edition) & CAN/ULC S115  
 ASTM E814, E1966, E2837  
 A1003, A653, A924, C645, C754, C955  
 Sound Tested according to ASTM E90-09  
 2015 & 2018 IBC

### Leed Points

MR 2.1 & 2.2 - Construction Waste: up to 2pts  
 MR 4.1 & 4.2 - Recycled Content: up to 2 pts  
 MR 5.1 & 5.2 - Regional Proximity  
 EQ 4.1 - Low Emitting Materials  
 EQ 9 - Enhanced Acoustical

Phone: (425) 869-2811 Fax: (425) 869-2300