

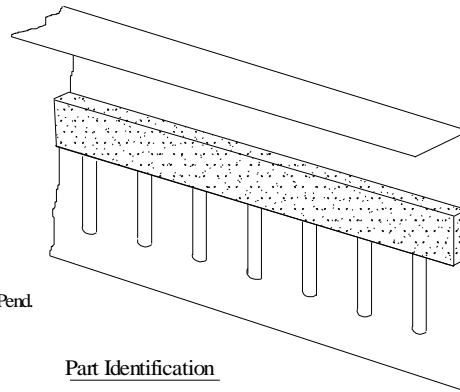
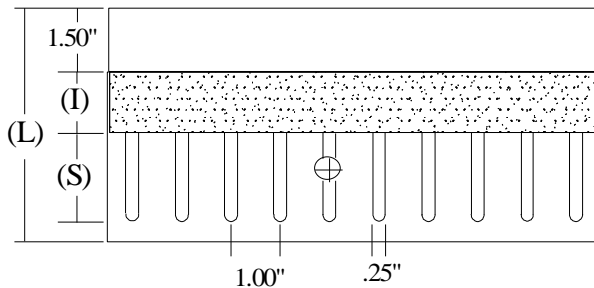
Product Profile Dimensions



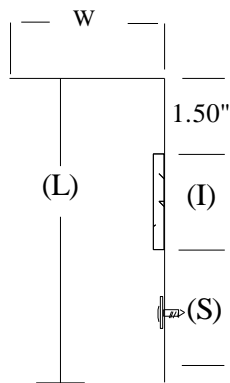
STC Rated (ASTM E90-09)

PS16 – SaftiFrame “ISA” (Inside Angle) slotted/vertical and solid horizontal legs

Composite Safti-Strip/Framing for use in up to 2 hr rated wall assemblies. Provides 100% unencumbered joint protection accommodating up to 1 1/2” overall movement with level III (seismic) certification. Minimum G40 (20ga) and G60 (18ga and heavier) coating used for “parallel to beam” conditions, accommodate 1 ½ z-clips, and fireproofing materials, providing slots 1” O/C for permanent attachment of studs per listed assemblies in UL Fire Resistance Directory.



Pat. Pend.



Widths (W)

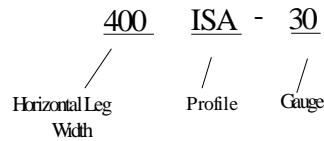
- 200 (2")
- 400 (4")
- 600 (6")
- 800 (8")

Gauge

- .030 (20)
- .033 (20)
- .043 (18)
- .054 (16)

Part Identification

Example: 400ISA - 30



Profile	Leg Length (L)	Strip Width (I)	Slot Height (S)	Joint Protection
ISA	4.50"	1.00"	1.50"	.75"
ISAW	4.50"	1.25"	1.50"	1.00"
ISAX	5.50"	1.75"	2.00"	1.50"

UL, ASTM & Code Standards

UL2079 (5th Edition) & CAN/ULC S115
 ASTM E814, E1966, E2837
 A1003, A653, A924, C645, C754, C955
 Sound Tested according to ASTM E90-09
 2015 & 2018 IBC

Lead Points

MR 2.1 & 2.2 - Construction Waste: up to 2pts
 MR 4.1 & 4.2 - Recycled Content: up to 2 pts
 MR 5.1 & 5.2 - Regional Proximity
 EQ 4.1 - Low Emitting Materials
 EQ 9 - Enhanced Acoustical

Phone: (425) 869-2811 Fax: (425) 869-2300