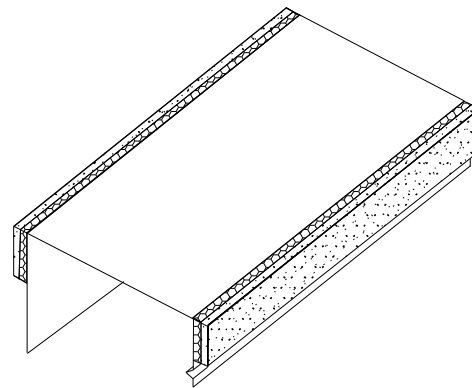
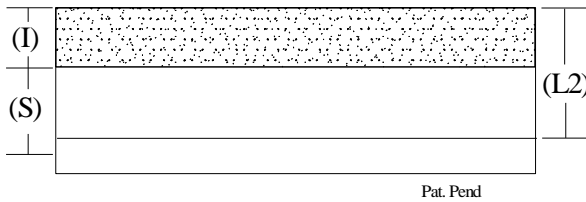


Product Profile Dimensions



PS19 – SaftiSeal “RCD” (Deep Leg Track Profile) to Accommodate Resilient Channel

Composite Safti-Seal/Framing for use in up to 2 hr rated wall assemblies. Minimum G40(20ga) and G60 (18ga and heavier) coating with one 2” leg for permanent attachment of studs and second 2” leg with 1/2” rib to accommodate resilient channel.



Part Identification

Example: 418RCS-30

$\frac{418}{\text{Track Width}}$ $\frac{\text{RCS}}{\text{Profile}}$ $\frac{30}{\text{Gauge}}$

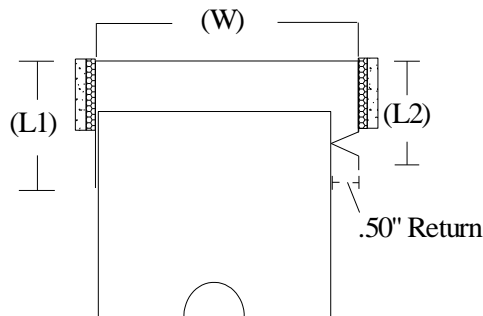
Widths (W)

418 (4 1/8")
 412 (4 1/2")
 612 (6 1/2")
 812 (8 1/2")

Gauge

.030 (20)
 .033 (20)
 .043 (18)

RCS-Series



Profile	Solid Leg Length (L1)	Ribbed Leg Length (L2)	Strip Width (I)	Joint Protection
RCD	3.00"	2.50"	1.00"	.75"
RCDW	3.00"	2.50"	1.25"	1.00"
RCDX	3.00"	2.50"	1.75"	1.50"

UL, ASTM & Code Standards

UL2079 (5th Edition) & CAN/ULC S115
 ASTM E814, E1966, E2837
 A1003, A653, A924, C645, C754, C955
 Sound Tested according to ASTM E90-09
 2015 & 2018 IBC

Leed Points

MR 2.1 & 2.2 - Construction Waste: up to 2pts
 MR 4.1 & 4.2 - Recycled Content: up to 2 pts
 MR 5.1 & 5.2 - Regional Proximity
 EQ 4.1 - Low Emitting Materials
 EQ 9 - Enhanced Acoustical

Phone: (425) 869-2811 Fax: (425) 869-2300