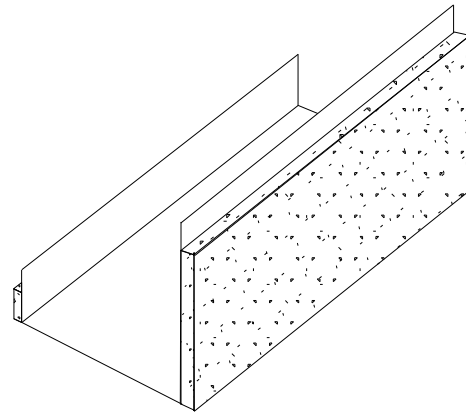
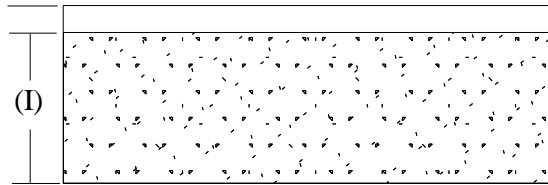


Product Profile Dimensions



PS57 - "BWJ" Bottom of Wall J-runner with Intumescent

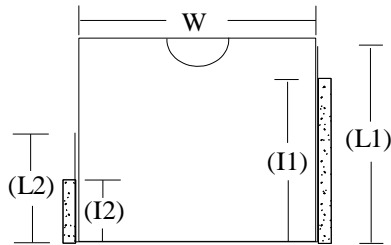
Composite Safti-Strip/Framing for protection of Cove Base at bottom of wall assemblies in up to 2 hr rated wall assemblies. Minimum G40 coated steel.



Widths (W)	Mil (Ga)
362 (3 5/8")	.030 (20)
400 (4")	.033 (20)
600 (6")	.043 (18)
800 (8")	.054 (16)

Part Identification
Example: 400BWJQ-30

400
BWJQ
- 30
 Track Width Profile Gauge



Profile	Leg Length (L1)	Strip Width (I1)	Leg Length (L2)	Strip Width (I2)	Joint Protection
BWJQ	6.00"	4.25"	2.00"	1.00"	4.00"
BWJY	5.00"	3.25"	2.00"	1.00"	3.00"
BWJZ	4.00"	2.25"	2.00"	1.00"	2.00"

ASTM & Code Standards

UL2079 (5th Edition) & CAN/ULC S115
 ASTM E814, E1966, E2837
 A1003, A653, A924, C645, C754, C955
 Sound Tested according to ASTM E90-09
 2015 & 2018 IBC

Leed Points

MR 2.1 & 2.2 - Construction Waste: up to 2pts
 MR 4.1 & 4.2 - Recycled Content: up to 2pts
 MR 5.1 & 5.2 - Regional Proximity
 EQ 4.1 - Low Emitting Materials
 EQ 9 - Enhanced Acoustical

Phone: (425) 869-2811 Fax: (425) 869-2300