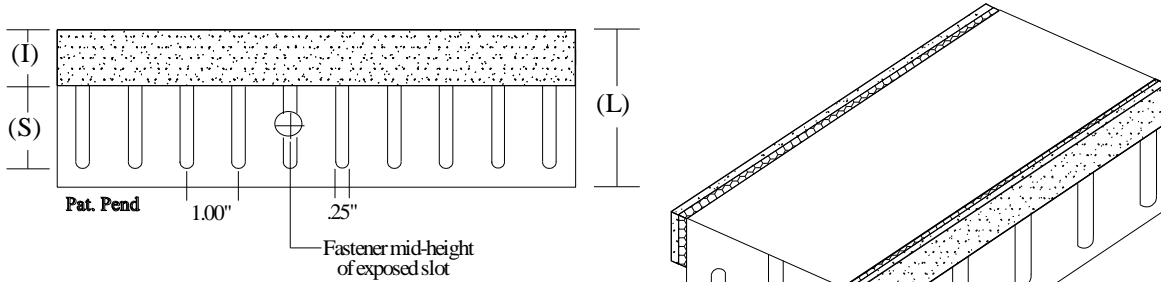


Product Profile Dimensions



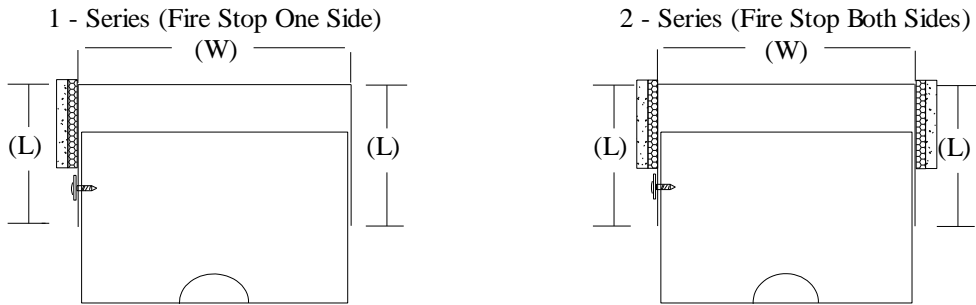
PS7 - SaftiFrame “DSL” (Slotted Both Sides) Profiles with two slotted legs

Composite Safti-Strip/Framing for use in up to 2 hr rated wall assemblies. Provides 100% unencumbered joint protection accommodates up to 1 1/2” overall movement with level III (seismic) certification. Minimum G40 (25ga) and G60 (18ga and heavier) coating two legs with slots spaced 1” O/C for attachment of studs per listed assemblies in UL Fire Resistance Directory.



Widths (W)	Mil (Ga)
250 (2 1/2")	.030 (20)
362 (3 5/8")	.033 (20)
400 (4")	.043 (18)
600 (6")	.054 (16)
800 (8")	.068 (14)

Part Identification
 Example: 362DSL2-30
 362 DSL 2 - 30
 Track Width Profile Series Gauge



Profile	Leg Length (L)	Strip Width (I)	Slot Height (S)	Joint Protection
DSL	3.00"	1.00"	1.50"	.75"
DSLW	3.00"	1.25"	1.50"	1.00"
DSLX	4.00"	1.75"	2.00"	1.50"

UL, ASTM & Code Standards

UL2079 (5th Edition) & CAN/ULC S115
 ASTM E814, E1966, E2837
 A1003, A653, A924, C645, C754, C955
 Sound Tested according to ASTM E90-09
 2015 & 2018 IBC

Leed Points

MR 2.1 & 2.2 - Construction Waste: up to 2pts
 MR 4.1 & 4.2 - Recycled Content: up to 2 pts
 MR 5.1 & 5.2 - Regional Proximity
 EQ 4.1 - Low Emitting Materials
 EQ 9 - Enhanced Acoustical

Phone: (425) 869-2811 Fax: (425) 869-2300