

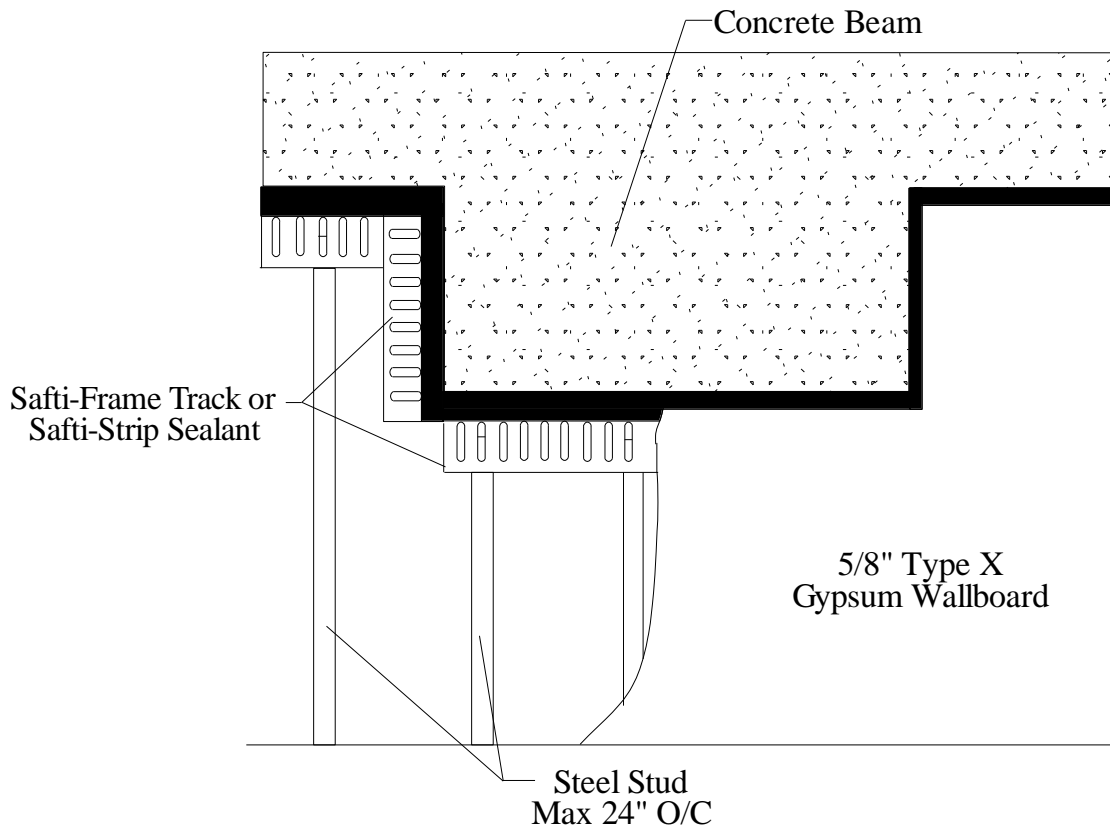
Flat Concrete Substrate



PT7 - Concrete Beam Penetration

Deflection Joint Protection - Strip / Framing Series design based on UL: [HW-D-0498](#)

.75" - 100 / Stock 1.00" - 125 / "W" 1.50" - 175 / "X" 2.00" - 225 / "Z"



1. Installed Gap - Single Story (compression only) = *Deflection Joint Protection*
2. Installed Gap - Multi-Story (compress + extension) = 1/2 distance of *Deflection Joint Protection*
3. Attach with approved fastener max 24" O.C or per E.O.R.
4. Do not screw drywall or stud to SaftiFrame solid leg profile studs "free float"
5. "Slotted" profile metal framing fastener installed center of slot (min. one side)
6. Drywall fasteners 1" to 4" below SaftiFrame to accommodate movement

UL, ASTM & Code Standards

UL2079 (5th Edition) & CAN/ULC S115
ASTM E814, E1966, E2837
A1003, A653, A924, C645, C754, C955
Sound Tested according to ASTM E90-09
2012 & 2015 IBC

Leed Points

MR 2.1 & 2.2 - Construction Waste: up to 2pts
MR 4.1 & 4.2 - Recycled Content: up to 2 pts
MR 5.1 & 5.2 - Regional Proximity
EQ 4.1 - Low Emitting Materials
EQ 9 - Enhanced Acoustical

Phone: (425) 869-2811 Fax: (425) 869-2300