

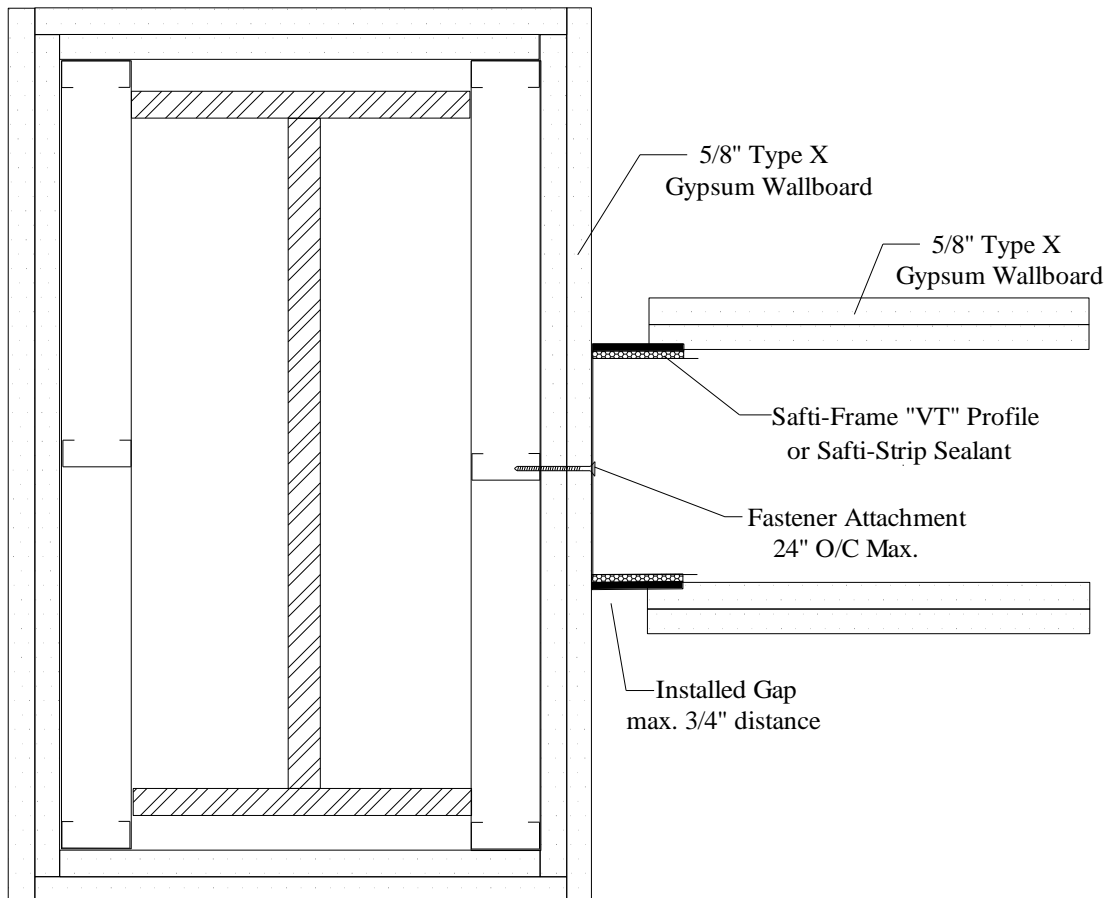
Vertical & Miscellaneous



VM2 - Wall to Wall Gypsum to Gypsum Beam Wrap

Deflection Joint Protection - Strip / Framing Series refer to UL Listing: [WW-S-0055](#) & [HW-D-0503](#)

.75" - 100 / Stock



1. Installed Gap = joint protection (JP) of profile
2. Attach through gypsum to metal framing in perpendicular wall assembly
3. Do not screw stud to BlazeFrame profile
4. Drywall installed per U400 or V400 UL certified wall designs

UL, ASTM & Code Standards

UL2079 (5th Edition) & CAN/ULC S115
ASTM E814, E1966, E2837
A1003, A653, A924, C645, C754, C955
Sound Tested according to ASTM E90-09
2012 & 2015 IBC

Leed Points

MR 2.1 & 2.2 - Construction Waste: up to 2pts
MR 4.1 & 4.2 - Recycled Content: up to 2 pts
MR 5.1 & 5.2 - Regional Proximity
EQ 4.1 - Low Emitting Materials
EQ 9 - Enhanced Acoustical

Phone: (425) 869-2811 Fax: (425) 869-2300