

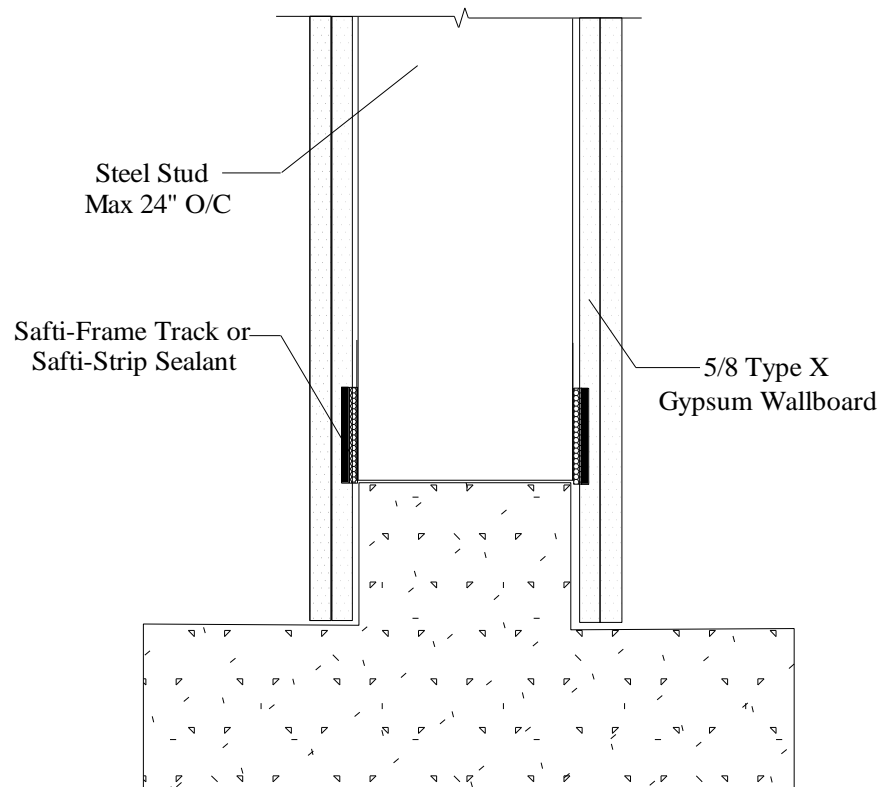
Vertical & Miscellaneous



VM24 - Bottom Standard on "Curb" Wall

Joint Protection and BT2 Profile Series used in design based on UL: [BW-S-0021](#)

Static Joint with overlapping wall sheathing in contact with intumescent strip providing air, smoke, sound, and fire rated seal



1. Wall Width = Curb Width - Wall Sheathing overlapping intumescent extend past both sides
2. Wall Width < Curb Width - Wall Sheathing extend past intumescent one side and overlap intumescent min. 1/4" opposing side "above" curb
3. Attach to substrate with approved fastener max 24" O.C or per E.O.R
4. OK to screw drywall and stud to Safti-Frame solid leg profile

UL, ASTM & Code Standards

UL2079 (5th Edition) & CAN/ULC S115
ASTM E814, E1966, E2837
A1003, A653, A924, C645, C754, C955
Sound Tested according to ASTM E90-09
2012 & 2015 IBC

Lead Points

MR 2.1 & 2.2 - Construction Waste: up to 2pts
MR 4.1 & 4.2 - Recycled Content: up to 2 pts
MR 5.1 & 5.2 - Regional Proximity
EQ 4.1 - Low Emitting Materials
EQ 9 - Enhanced Acoustical

Phone: (425) 869-2811 Fax: (425) 869-2300