

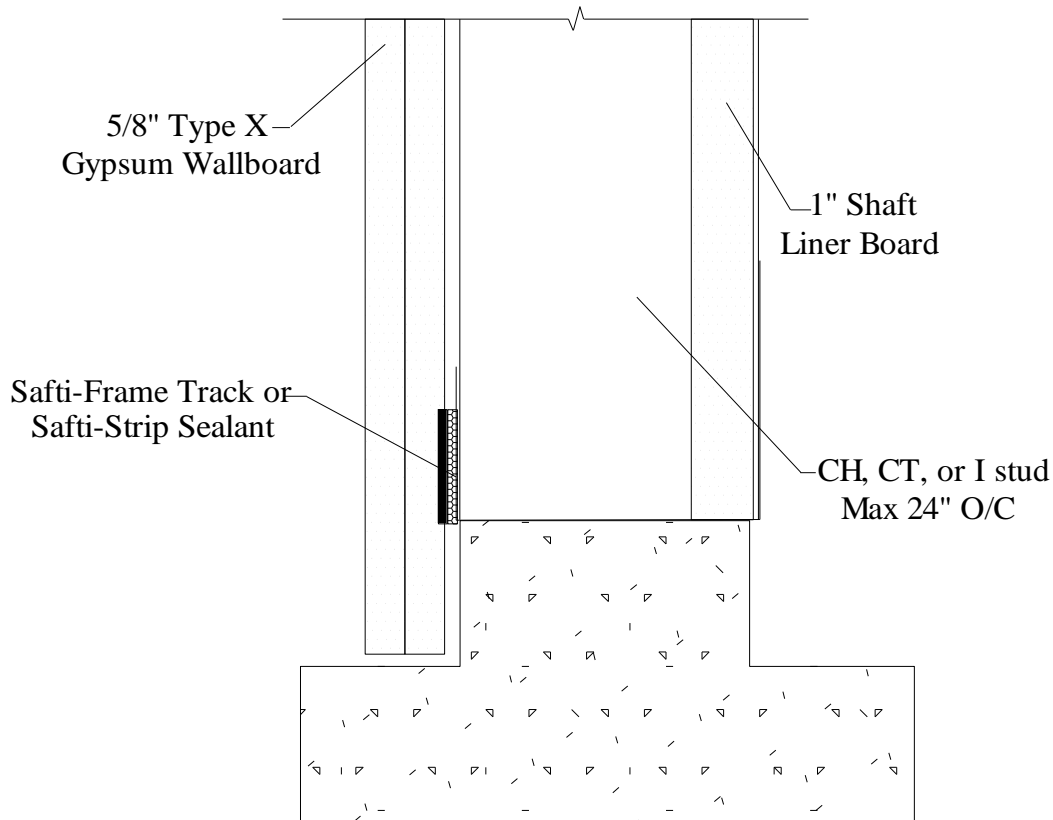
Vertical & Miscellaneous



VM25 - Bottom Shaft on "Curb" Wall

Joint Protection and BT2 Profile Series design based on UL: [BW-S-0021](#) & [HW-D-0496](#)

Static Joint with overlapping wall sheathing in contact with intumescent strip providing air, smoke, sound, and fire rated seal



1. Wall Sheathing overlapping intumescent extend past finished side of wall
2. Attach to substrate with approved fastener max 24" O.C or per E.O.R
4. OK to screw drywall and stud to Safti-Frame solid leg profile

UL, ASTM & Code Standards

UL2079 (5th Edition) & CAN/ULC S115
ASTM E814, E1966, E2837
A1003, A653, A924, C645, C754, C955
Sound Tested according to ASTM E90-09
2012 & 2015 IBC

Leed Points

MR 2.1 & 2.2 - Construction Waste: up to 2pts
MR 4.1 & 4.2 - Recycled Content: up to 2 pts
MR 5.1 & 5.2 - Regional Proximity
EQ 4.1 - Low Emitting Materials
EQ 9 - Enhanced Acoustical

Phone: (425) 869-2811 Fax: (425) 869-2300