

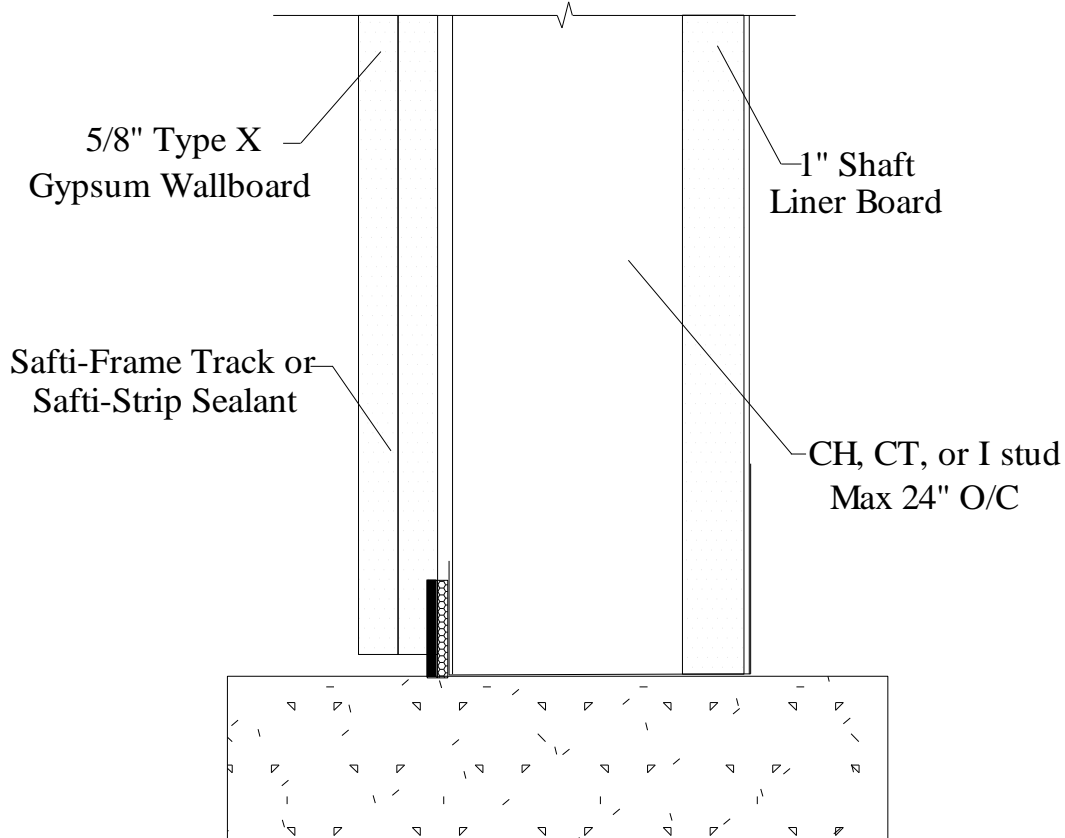
## Vertical & Miscellaneous



### VM26 - Bottom Shaft Wall

Joint Protection and BT2 Profile Series design based on UL: [BW-S-0021](#) & [HW-D-0496](#)

Static Joint with overlapping wall sheathing in contact with intumescent strip providing air, smoke, sound, and fire rated seal



1. Wall Sheathing overlapping intumescent min. 1/4"
2. Attach to substrate with approved fastener max 24" O.C or per E.O.R
3. OK to screw drywall and stud to Safti-Frame solid leg profile

#### UL, ASTM & Code Standards

UL2079 (5<sup>th</sup> Edition) & CAN/ULC S115  
ASTM E814, E1966, E2837  
A1003, A653, A924, C645, C754, C955  
Sound Tested according to ASTM E90-09  
2012 & 2015 IBC

#### Leed Points

MR 2.1 & 2.2 - Construction Waste: up to 2pts  
MR 4.1 & 4.2 - Recycled Content: up to 2 pts  
MR 5.1 & 5.2 - Regional Proximity  
EQ 4.1 - Low Emitting Materials  
EQ 9 - Enhanced Acoustical

Phone: (425) 869-2811 Fax: (425) 869-2300

[www.saftiseal.com](http://www.saftiseal.com)