

Vertical & Miscellaneous



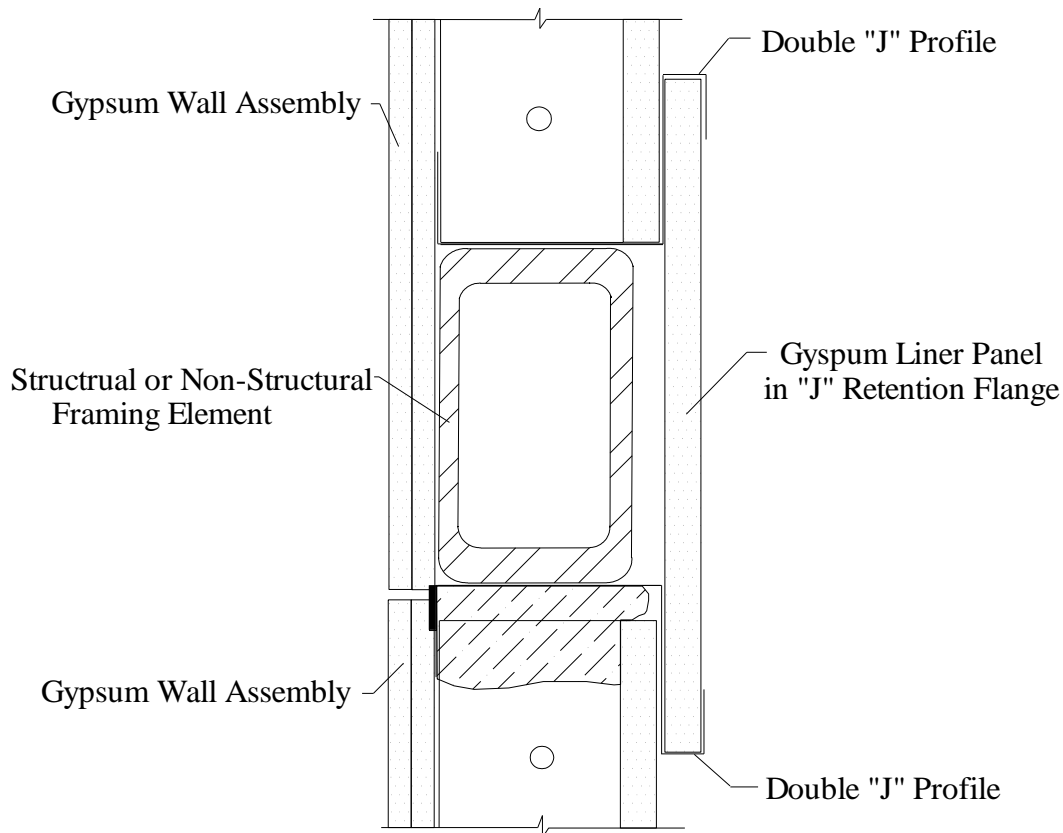
VM31 – Spreader Beam/HSS Shaft Wall DJR Profile with Liner Rip

Joint Movement Capabilities (MC) / Profile Series refer to UL Listing: [HW-D-0496](#)

3/4" MC - (Stock Series)

1" MC - ("W" Series)

1 1/2" MC - ("X" Series)



1. Installed Gap (compress + extension) = 1/2 movement capability (MC) of profile
2. Attach to substrate with approved fastener max 24" O/C or per E.O.R.
3. Do not screw drywall or stud to Safti-Frame DJR profile studs "free float"
4. Drywall fasteners 1" to 4" below Safti-Frame to accommodate MC
5. HSS Beam non-structural - installed Liner Rip for continuation of Wall Assembly Rating only

UL, ASTM & Code Standards

UL2079 (5th Edition) & CAN/ULC S115
ASTM E814, E1966, E2837
A1003, A653, A924, C645, C754, C955
Sound Tested according to ASTM E90-09
2012 & 2015 IBC

Leed Points

MR 2.1 & 2.2 - Construction Waste: up to 2pts
MR 4.1 & 4.2 - Recycled Content: up to 2 pts
MR 5.1 & 5.2 - Regional Proximity
EQ 4.1 - Low Emitting Materials
EQ 9 - Enhanced Acoustical

Phone: (425) 869-2811 Fax: (425) 869-2300

www.saftiseal.com