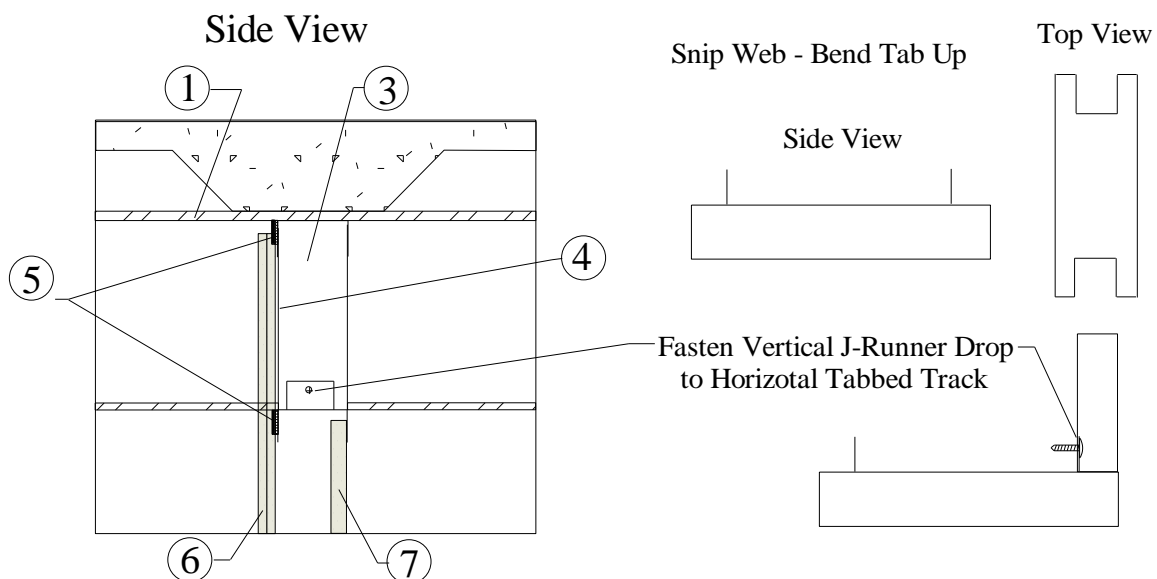
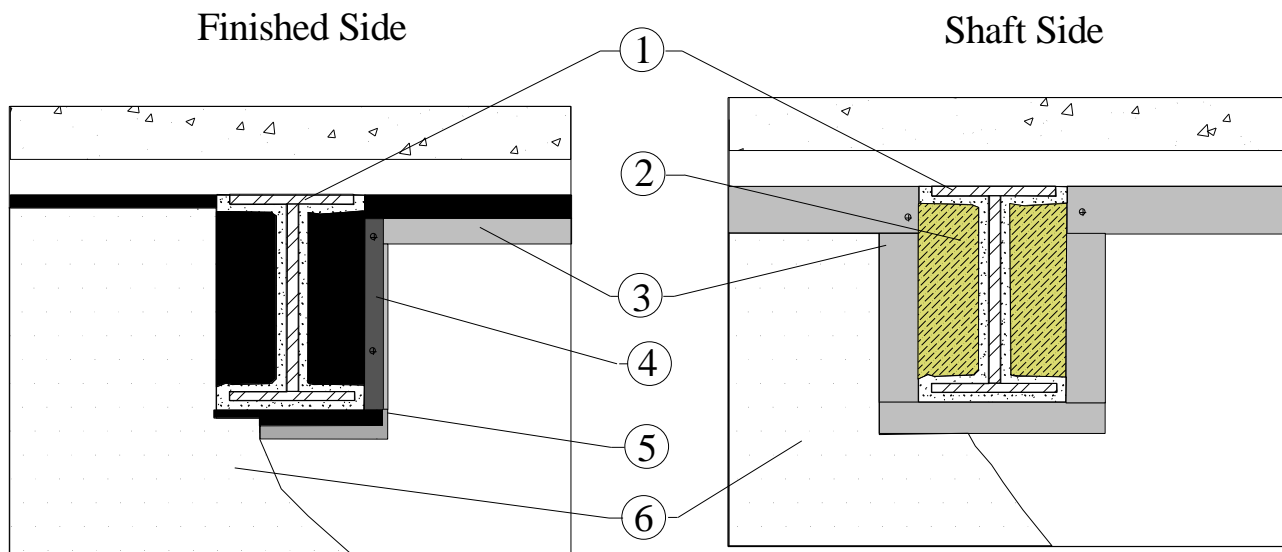




I-Beam Penetration – Shaft Wall

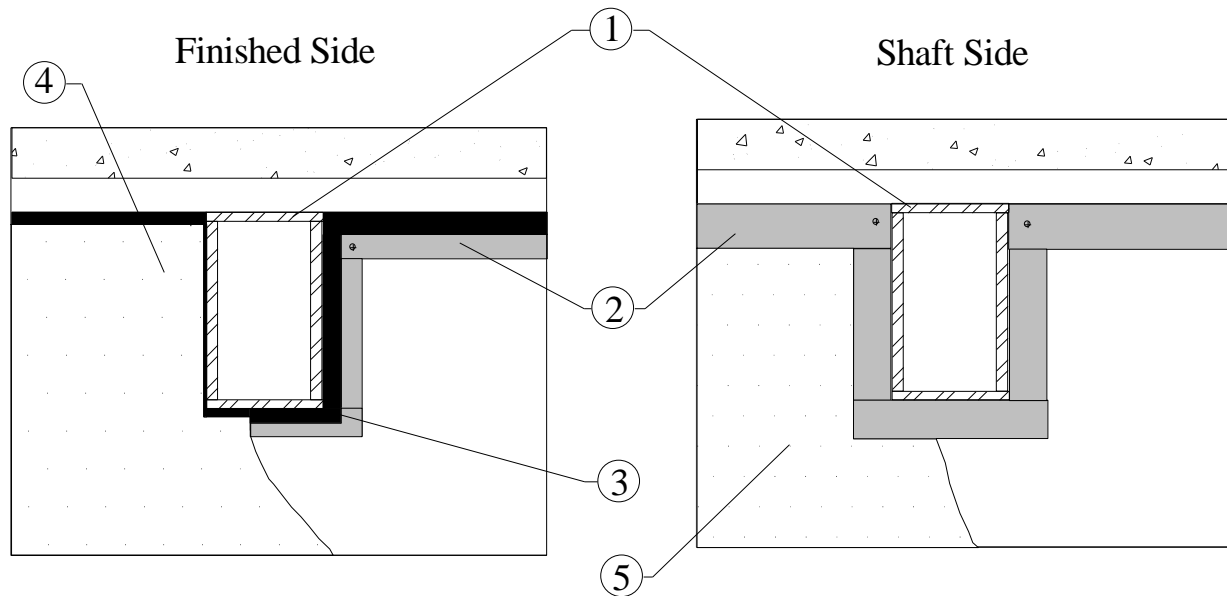
- 1) Coated Fire-Proofed I-Beam Penetration
- 2) Min. 4 pcf mineral wool compress min. 50% fill beam pocket cavity (alt. fill with SFRM)
- 3) J-Runner track “Horseshoe” around beam
- 4) Safti-Seal Beam Pocket Gasket (BPG) – contour cut and install Finished Side Only
- 5) Safti-Seal FRG “Horseshoe” around beam for horizontal deflection and vertical seal
- 6) Square cut Liner Panel around I-Beam – Beam Pocket Gasket (BPG) left exposed





HSS Tube Penetration – Shaft Wall (Square Cut)

- 1) HSS Penetration
- 2) J-Runner track “Horseshoe” around beam (attach to HSS)
- 3) Safti-Seal FRG “Horseshoe” around beam for horizontal deflection and vertical seal
- 4) Contour cut drywall max 1.00” short of I-Beam web and flanges
- 5) Square cut Liner Panel around I-Beam



Both conditions:

- 1) Framing, Liner Panel, Mineral Wool, and Safti-Seal FRG installed from finished side
- 2) Liner Panel square cut around penetration and fully supported by J-Runner framing
- 3) Safti-Seal FRG allows vertical deflection along Penetration which Caulk/Sprays are not rated for “shearing” motion vertically
- 4) 100% movement capability with no Caulk/Spray required