

Project Submittal – Metal Deck w/Coated Beams



Submittal Packet – Bare Fluted Metal Deck - Coated Beams

1. Plan Set Details "Typical" Conditions for Bare Fluted Metal Deck and Coated Beam Substrates with links to UL Listed Assemblies and Safti-Frame Detailed Assemblies
2. Product Profiles with links to Profile Submittal Sheets commonly used for Bare Fluted Metal Deck and Coated Beam Substrates
3. Documentation:
 - a. STC
 - b. Safti-Frame LEED Information

*****Click on Blue Highlighted to follow Direct Links*****

Additional Assemblies, Solutions, & Information available at www.saftiseal.com

[Header Assemblies - *HJC Clip*](#)

[Backing Assemblies - *NSB & FBP*](#)

[Installation, Recommendations, Repair](#)

[Chemical Compatibility with Sealants](#)

[Material Safety Data Sheets](#)

[Buy American Act Certification](#)

[Install Guide/Tips Fluted Deck & Beams](#)

[Install Guide Beam Penetration - Offset Leg Profile](#)

[Install Guide Beam Penetration - Snipped Single Piece](#)

[Install Guide Beam Penetration - Tabbed Track](#)

Assembly and Product Certifications and Leeds

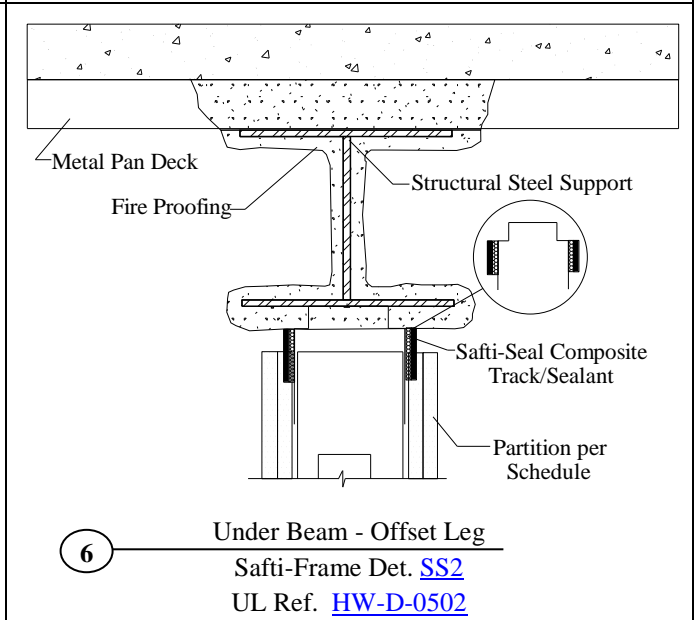
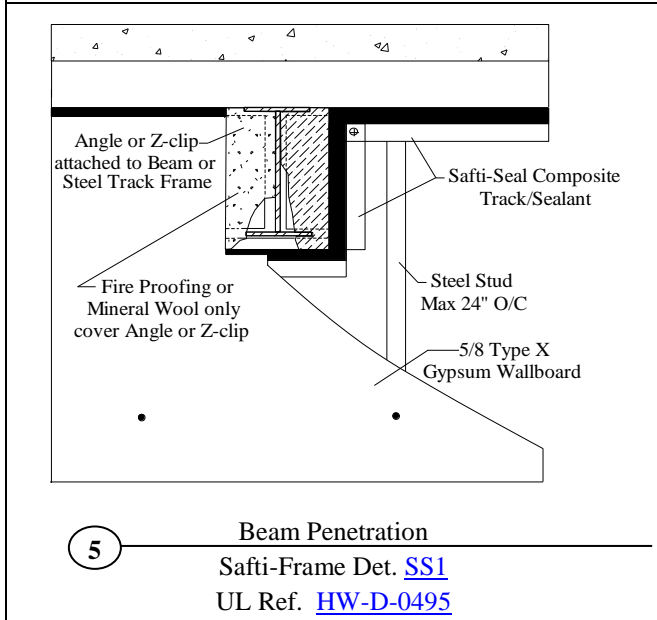
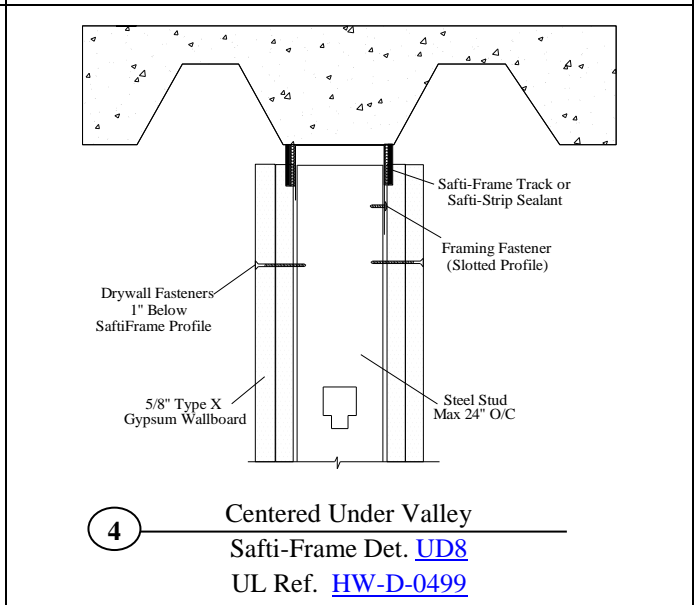
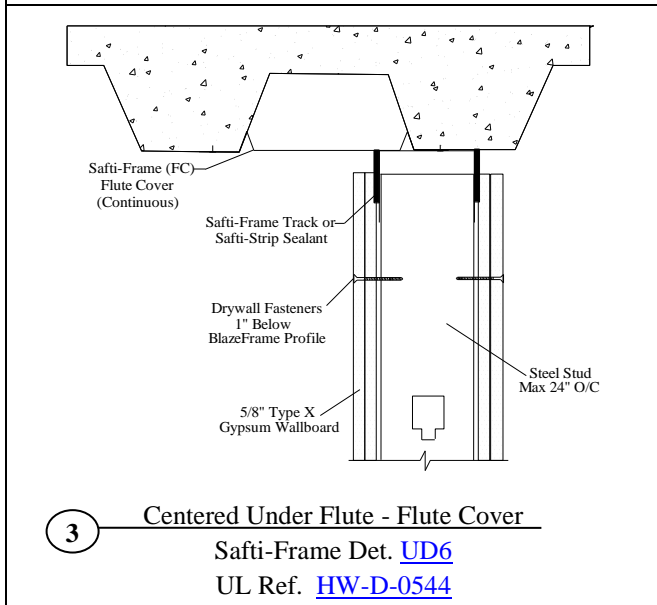
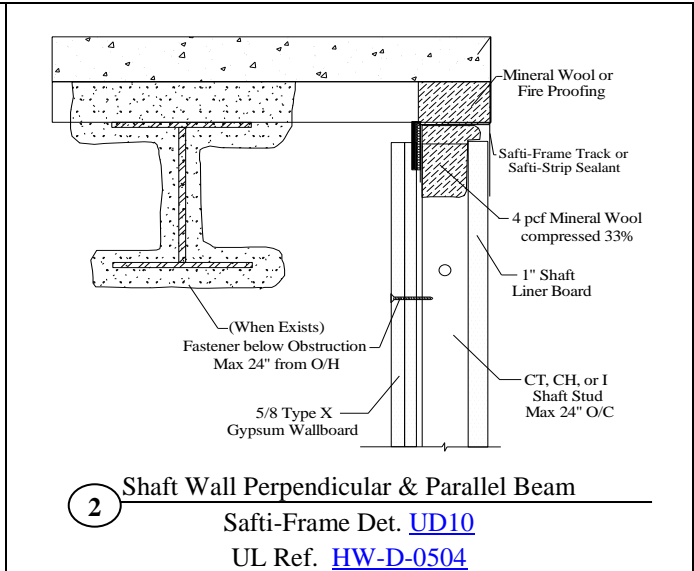
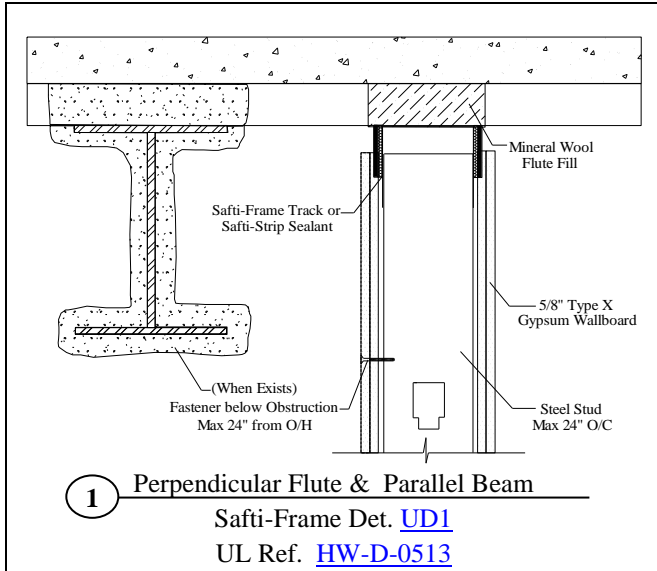
UL, ASTM & Code Standards

UL2079 (5th Edition) & CAN/ULC S115
ASTM E814, E1966, E2837
A1003, A653, A924, C645, C754, C955
Sound Tested according to ASTM E90-09
2012 & 2015 IBC

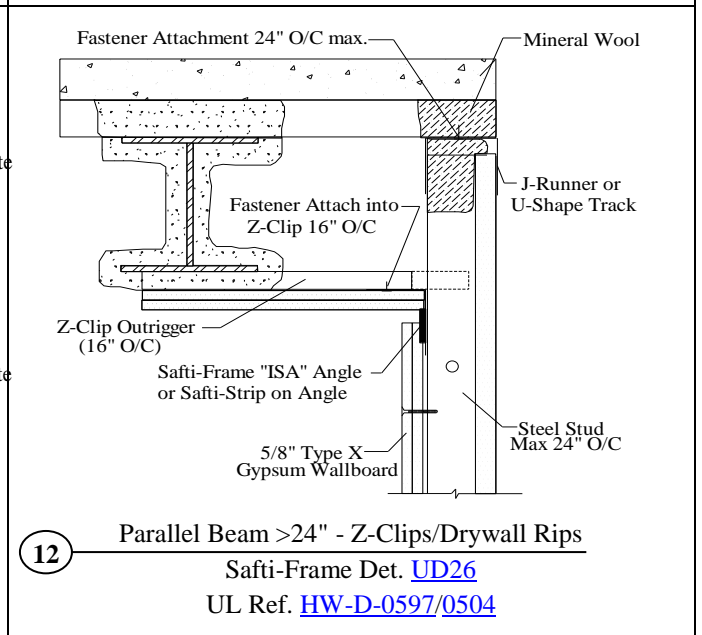
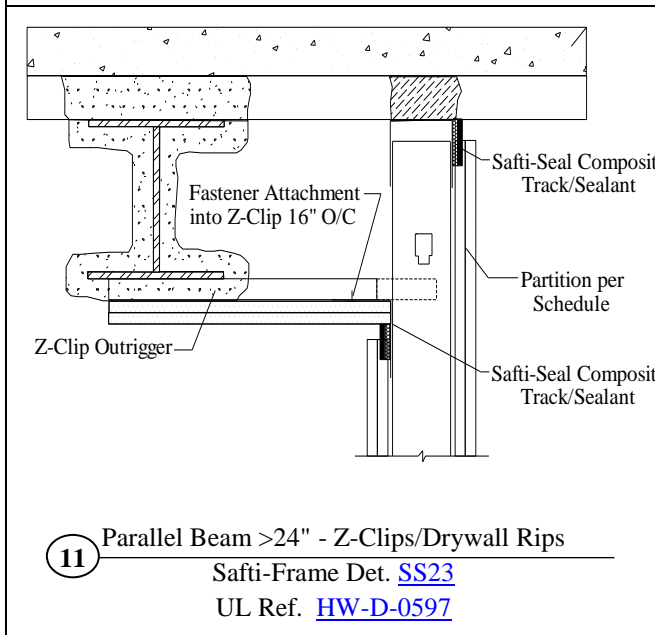
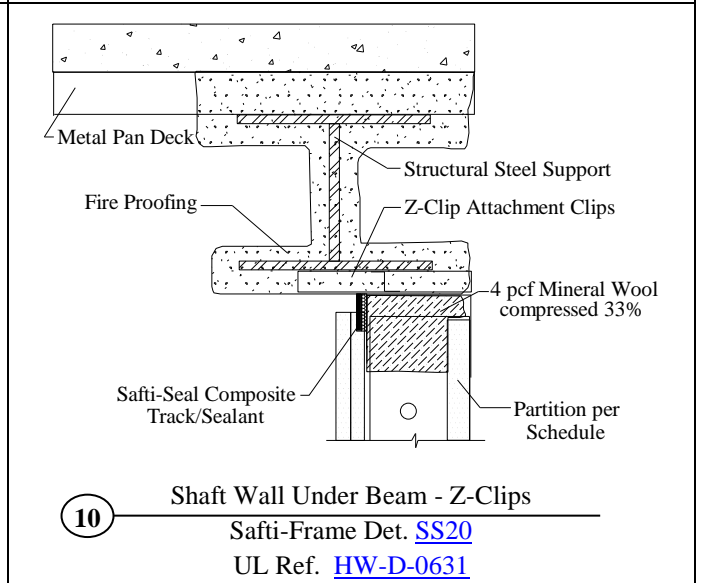
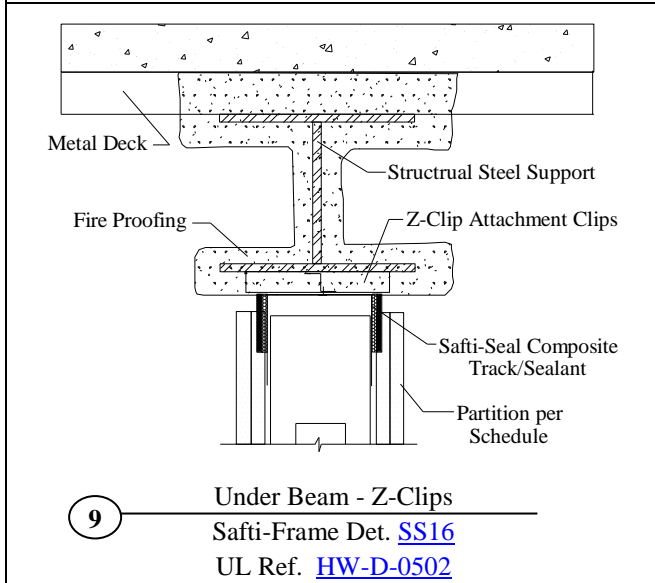
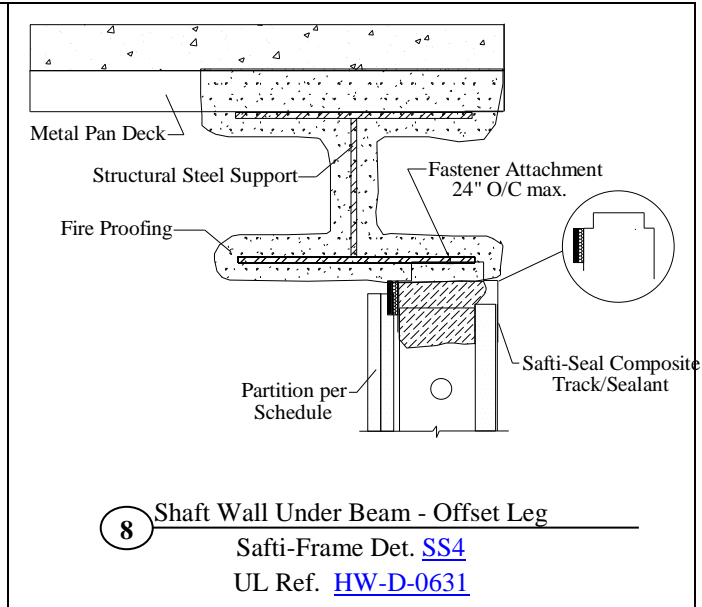
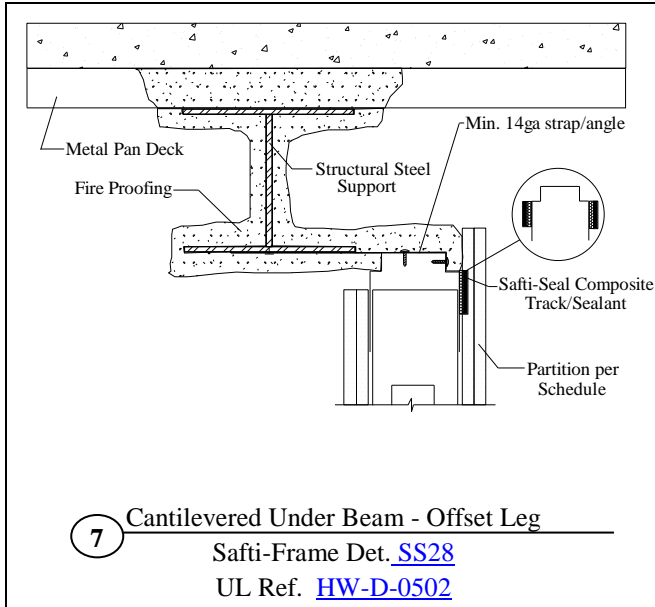
Leed Points

MR 2.1 & 2.2 - Construction Waste: up to 2pts
MR 4.1 & 4.2 - Recycled Content: up to 2 pts
MR 5.1 & 5.2 - Regional Proximity
EQ 4.1 - Low Emitting Materials
EQ 9 - Enhanced Acoustical

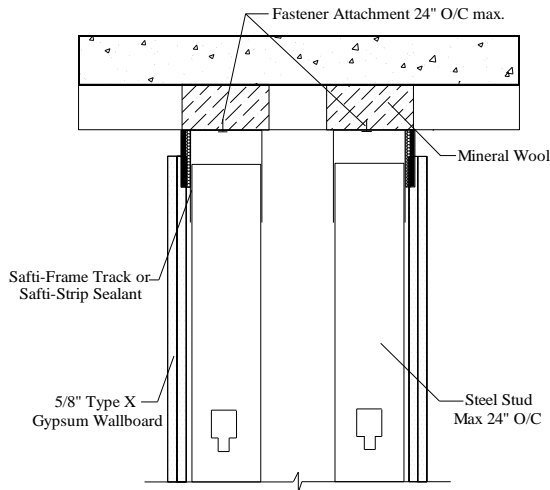
Project Submittal – Metal Deck w/Coated Beams



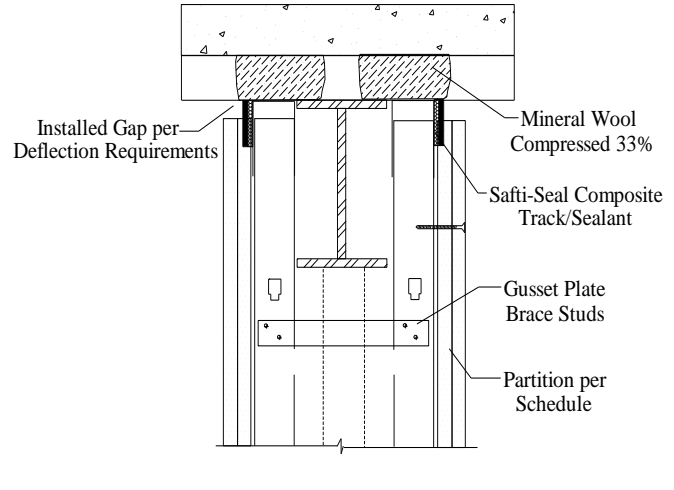
Project Submittal – Metal Deck w/Coated Beams



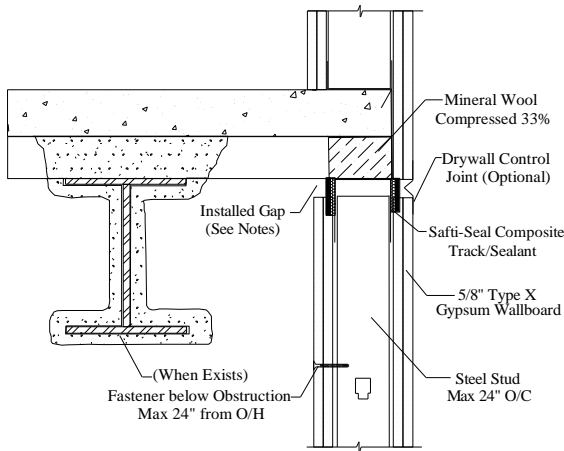
Project Submittal – Metal Deck w/Coated Beams



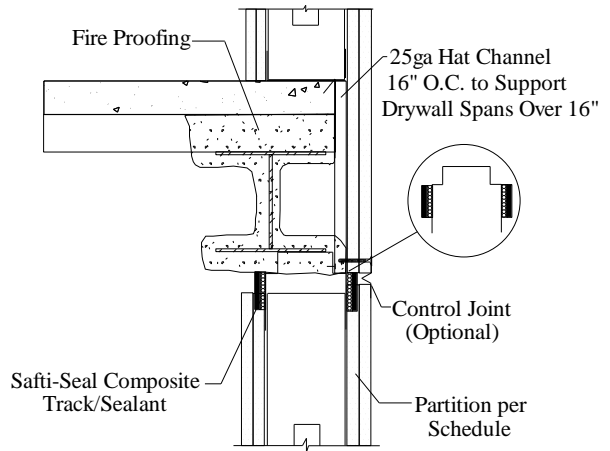
13 Chase Wall - Perpendicular
Safti-Frame Det. [UD4](#)
UL Ref. [HW-D-0506](#)



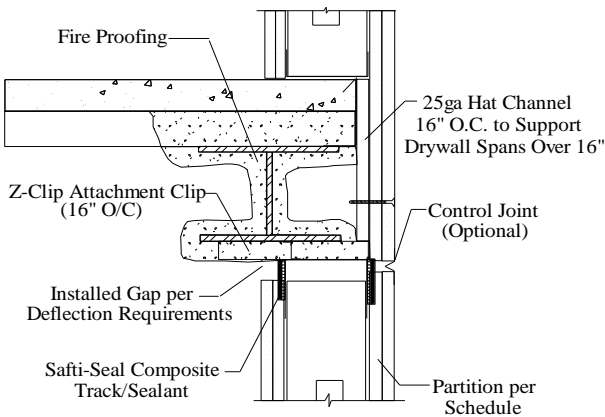
14 Chase Wall - Diagonal Bracing
Safti-Frame Det. [SS33](#)
UL Ref. [HW-D-0506](#)



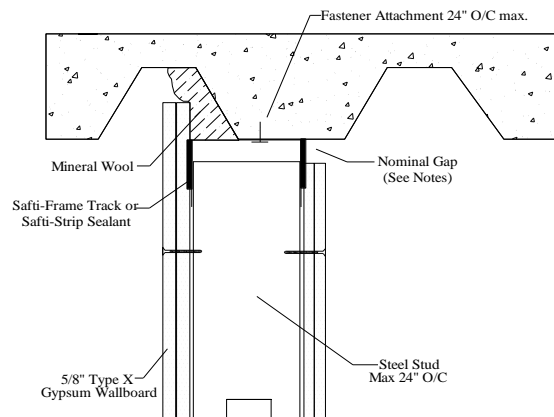
15 Stair Shaft - Control Joint
Safti-Frame Det. [UD11](#)
UL Ref. [HW-D-0543](#)



16 Stair Shaft Beam - Control Joint
Safti-Frame Det. [SS5](#)
UL Ref. [HW-D-0502/0543](#)

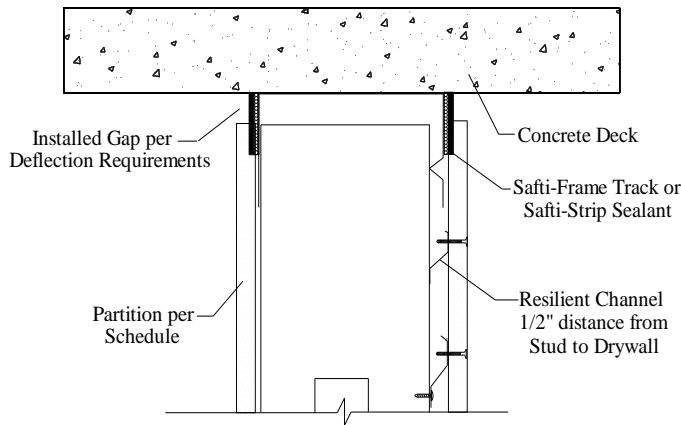


17 Stair Shaft Beam Z-Clips - Control Joint
Safti-Frame Det. [SS18](#)
UL Ref. [HW-D-0502/0543](#)

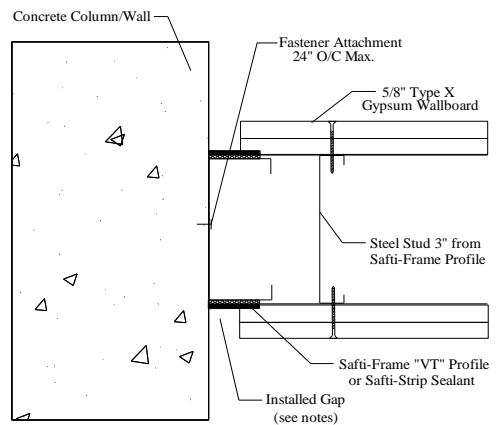


18 Offset Under Valley - Mineral Wool
Safti-Frame Det. [UD13](#)
UL Ref. [HW-D-0499](#)

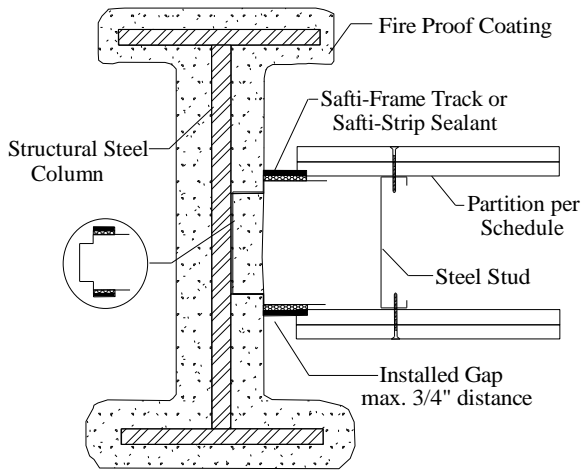
Project Submittal – Metal Deck w/Coated Beams



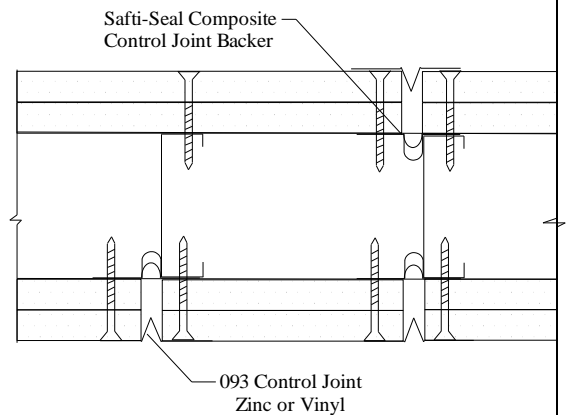
19 Sound Wall - Resilient Channel
Safti-Frame Det. [VM11](#)
UL Ref. [HW-D-0498](#)



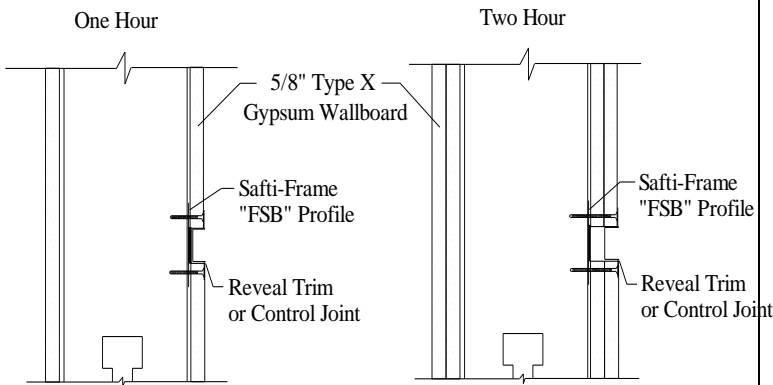
20 Vertical Joint - Concrete
Safti-Frame Det. [VM1](#)
UL Ref. [WW-S-0055](#)



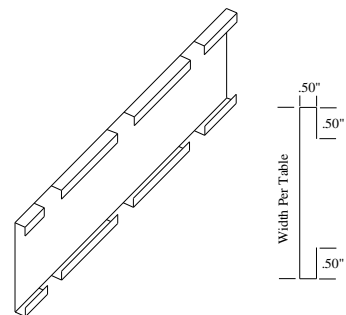
21 Vertical Joint - I-Beam
Safti-Frame Det. [VM3](#)
UL Ref. [WW-S-0055/HW-D-0558](#)



22 Fire Rated Control Joints
Safti-Frame Det. [VM27](#)
WFCi Ref. [Report #12033](#)



23 Fire Rated Reveal Trims
Safti-Frame Det. [VM7](#)
WFCi Ref. [Report #12142](#)

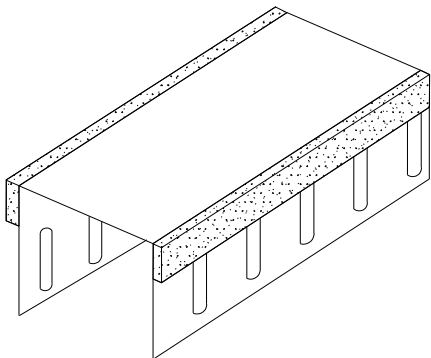


Meets Requirements of:
ADAAG Section 4.26 (Grab Bars, Hand Rails, and Shower Seats)
OSHPD 2013 CBC (Details ST5.00, ST5.01, and ST5.03)

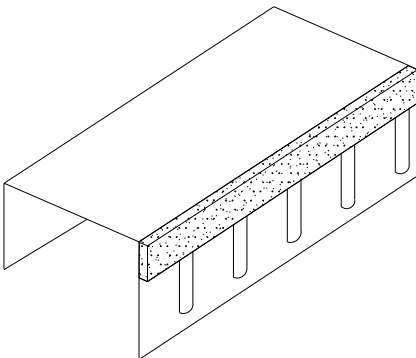
24 Notched Strong Back Backing
Safti-Frame Det. [PS51](#)

See [Load Tables](#) for Horizontal and Vertical Capacity

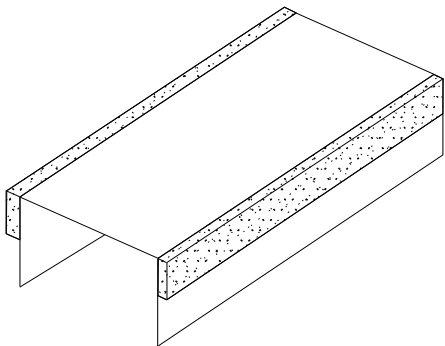
Project Submittal – Metal Deck w/Coated Beams



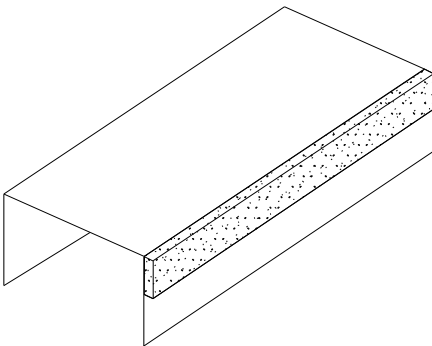
[DSL2](#) - Single Wall



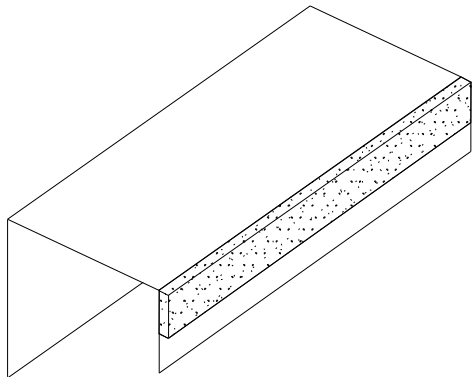
[SL1](#) - Chase Wall



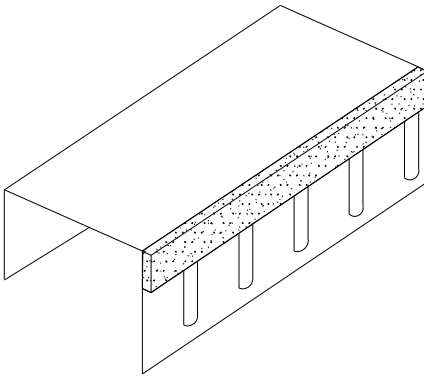
[DL2](#) - Single Wall



[DL1](#) - Chase Wall



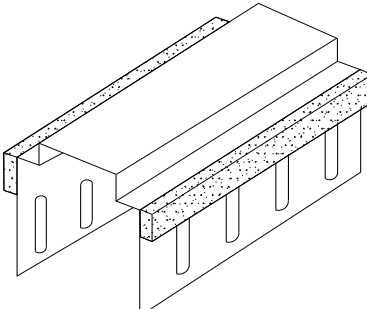
[JR](#) - Shaft Wall



[JRS](#) - Shaft Wall

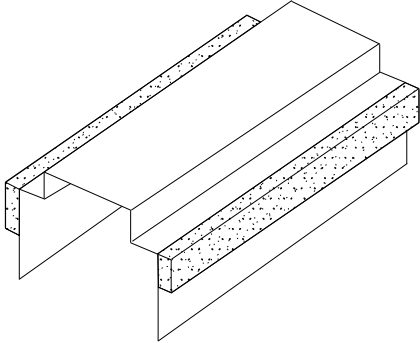


[Safti-Strip](#) – Roll Material

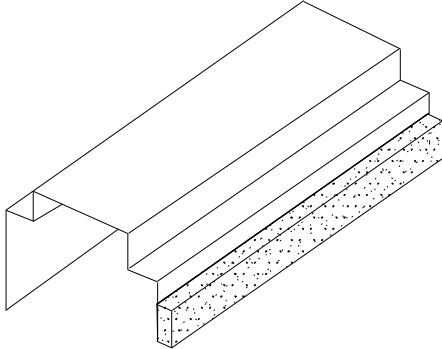


[ODSL](#) - Offset Leg Slotted

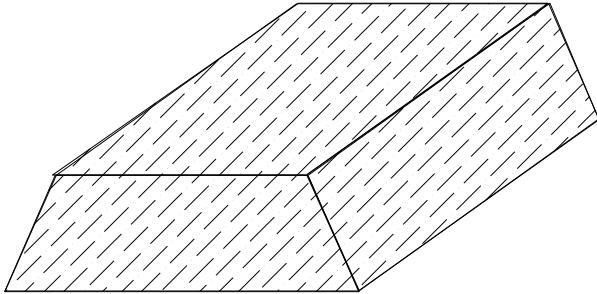
Project Submittal – Metal Deck w/Coated Beams



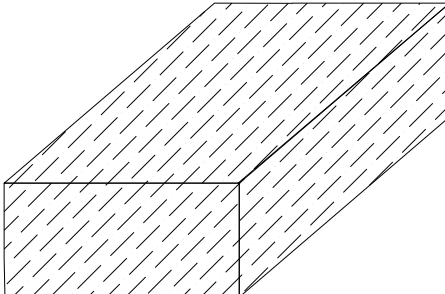
[ODL](#) - Offset Leg Solid



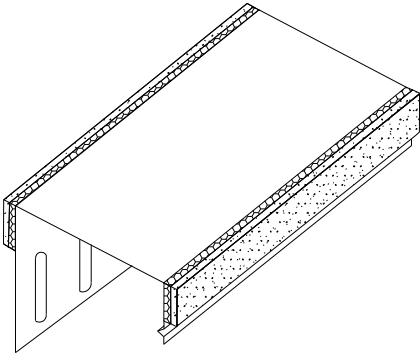
[OJR](#) - Offset Leg J-runner



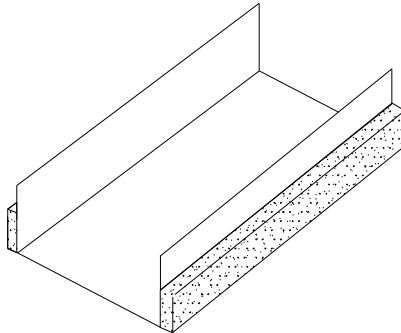
[DP](#)- Safti-Frame Deck Plug



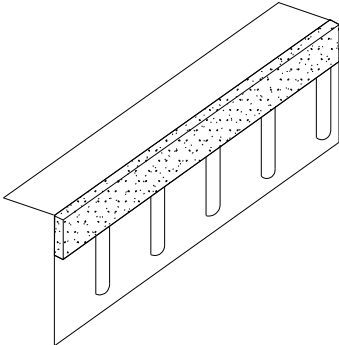
[SWCP](#) - Shaft Cavity Plug



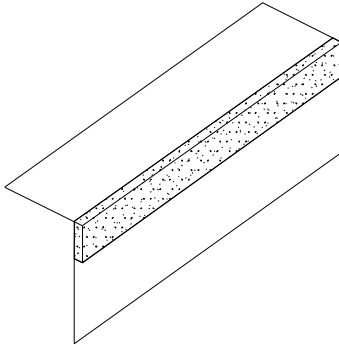
[RCS](#) - Resilient Channel



[BT](#) - Bottom Track

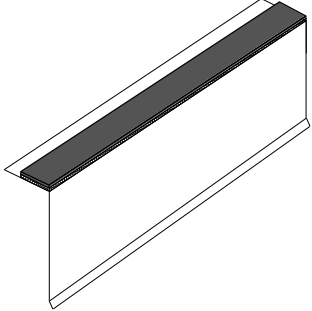
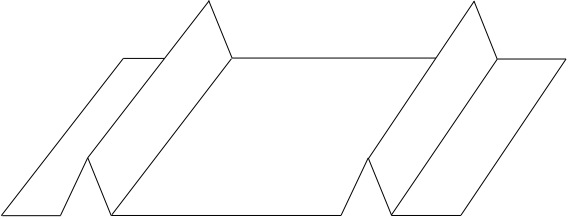
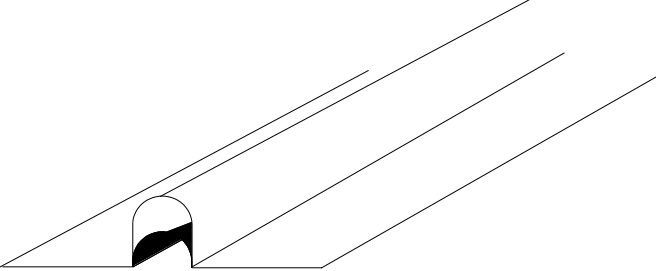
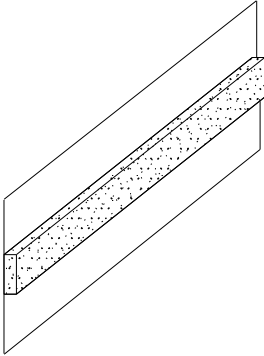
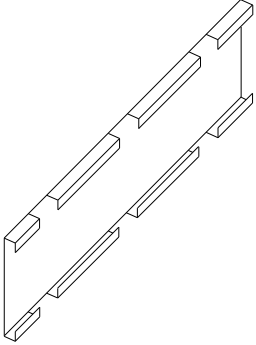
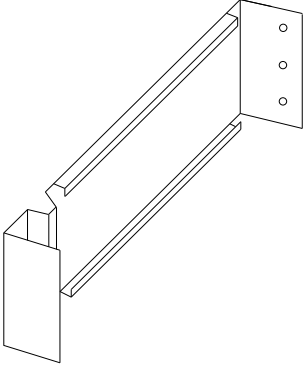
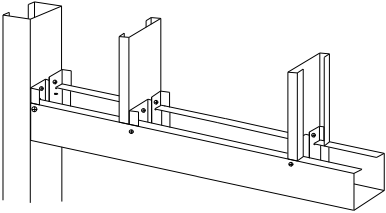
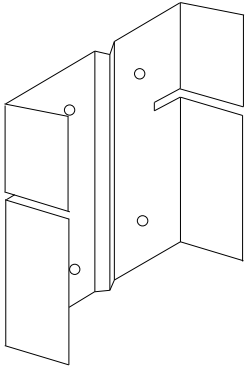


[OSA](#) - Bypass Cavity Obstructions



[OAN](#) - Bypass Cavity Obstructions

Project Submittal – Metal Deck w/Coated Beams

 <p>FCA – Flute Cover Angle</p>	 <p>FC - Flute Cover</p>
 <p>CJB - Fire Rated Control Joint Backer</p>	 <p>FSB - Fire Rated Reveal Trim Backer</p>
 <p>NSB - Notched Strong Back</p>	 <p>FBP - Flush Backing Plate</p>
 <p>Header System</p>	 <p>HJC - Header, Jamb, Cripple Clip</p>

Project Submittal – Metal Deck w/Coated Beams

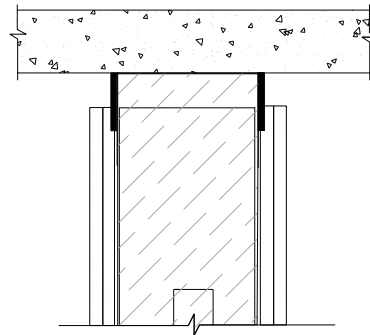


Safti-Seal Benefits

Safti-Strip "gasket" Joint Protection
Direct Attachment - No Caulk at Substrate
Reduced Sound Transfer
Sound Dampened Metal Profiles
Exposed Head of Wall and Deflection Gaps
Level III Dynamic Cycle (seismic) Rated
Lifetime Protection - No Joint Fatigue

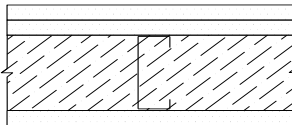
Safti-Seal Tested Wall Assemblies

1/2" to 3/4" Exposed Deflection Gaps
5/8" Type X Gypsum Sheathing
3 1/2" Fiberglass Insulation Cavity Fill



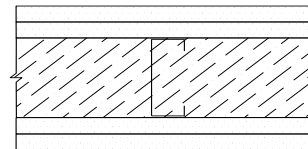
STC - 51

Single Wall Unbalanced - (TL 17-289)



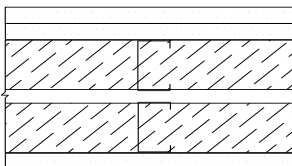
STC - 55

Single Wall Balanced - (TL 17-288)



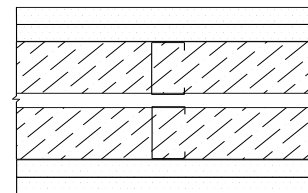
STC - 63

Chase Wall Unbalanced - (TL 17-293)



STC - 64

Chase Wall Balanced - (TL 17-292)



WESTERN ELECTRO - ACOUSTIC LABORATORY
A division of Knowledge Associates, Inc.

NVLAP accredited
ASTM E90-04

Project Submittal – Metal Deck w/Coated Beams



LEED (Leadership in Energy and Environmental Design)

The following information is provided to assist Architects and Persons responsible for obtaining a U.S. Green Building Council (USGBC) Certification.

Safti-Frame composite steel/intumescent profiles are manufactured in Auburn, WA and consist of a ratio of steel to intumescent (by weight) of approximately 90% and 10% respectively. Our product profiles qualify for the following credit requirements:

Steel:

Credit MR 2.1 & 2.2 - Construction Waste Management: up to 2 points

Credit MR 4.1/4.2 – Recycled Content Requirements

Steel used in the manufacture of our steel profiles contains approximately 32.3% recycled steel consisting of 25.5% Post-Consumer and 6.8% Pre-Consumer.

Credit MR 5.1/5.2 – Regional Materials Requirements (Applies for some projects)

Steel used in the manufacture of our steel profiles is purchased from sources within 500 miles of our manufacturing facility (Auburn, WA). Steel may contain local materials and recycled content, not all of the steel content generally comes from local sources.

Intumescent:

Credit EQ 4.1 – Low Emitting Materials: Adhesives & Sealants

Cured intumescent and adhesives used in the manufacture of our profiles contain less than 10 g/l volatile organic compounds (VOC) and comply with limits established by the South Coast Air Quality Management District (SCAMQD) Rule #1168, and the Bay Area Air Quality Management District Regulation 8, Rule 51.

Credit EQ 9 – Enhanced Acoustical

Why is there no LEED Certification on the product label?

According to USGBC: “USGBC certifies buildings, not the materials that are used to construct the buildings. Only USGBC can use the LEED logo. All others violate USGBC’s registered trademark rights.”